

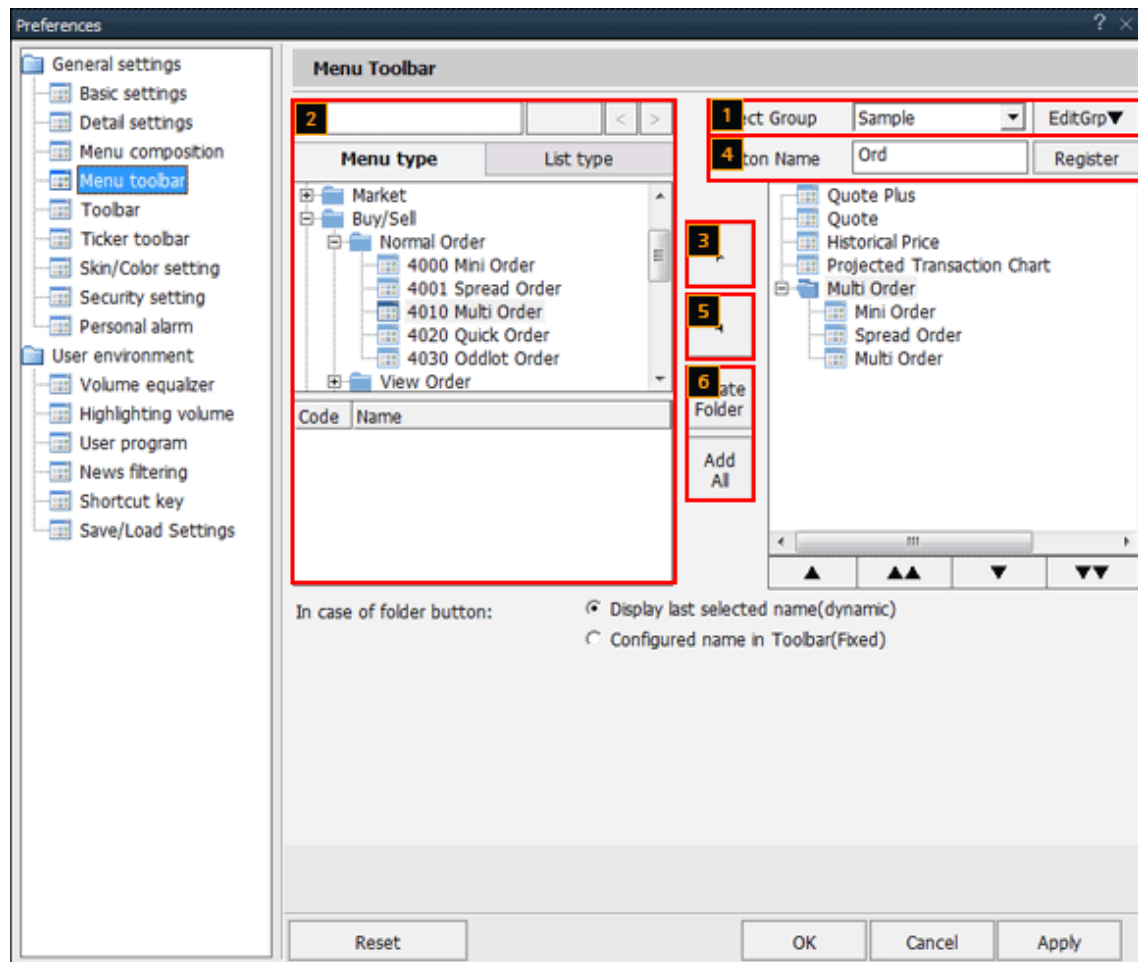
## How to Choose Menu Toolbar!

### How to Choose Menu Toolbar!

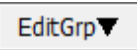
Q: I want to know how to choose the menu toolbar.

A: You can set your own menu toolbar under [Features → Preferences(E) → General settings → Menu toolbar.]"

The user can configure the toolbar group displayed as buttons in addition to the main menu.




- 1 Select a toolbar group.

To register a new group, rename a group or delete a group, click  button and select the respective command.

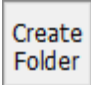
- 2 Select a screen to be added to the toolbar group from the menu.


A screen to be added can be selected from the menu tree. A screen can be selected by entering a search keyword at the top of the screen and showing a list of related screens at the bottom.

- 3 Double click name of the screen to be added, or click name of the screen to select it and then click  button to add the screen to the toolbar group.

- 4 When a button name is added, the added button name is displayed instead of screen name.

- 5 Select a screen from the toolbar group and click  button to remove the screen.

**6** To create a toolbar folder and add multiple screens to the folder, click  button and add screens to the folder created.

**2** Search screens to be added at the top of this area and click  button to add all screens searched.