

[Main] Main

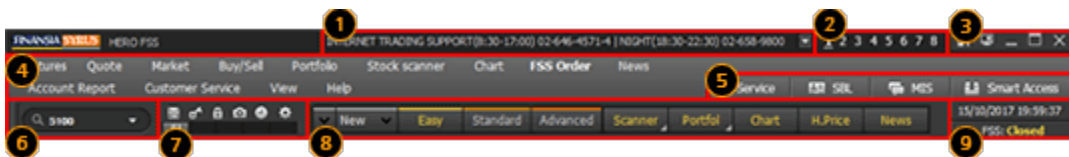
1. Overall Screen Composition

FSS HERO HTS is divided into top menu bar, bottom ticker bar and screen view area in the middle where screens pop up.

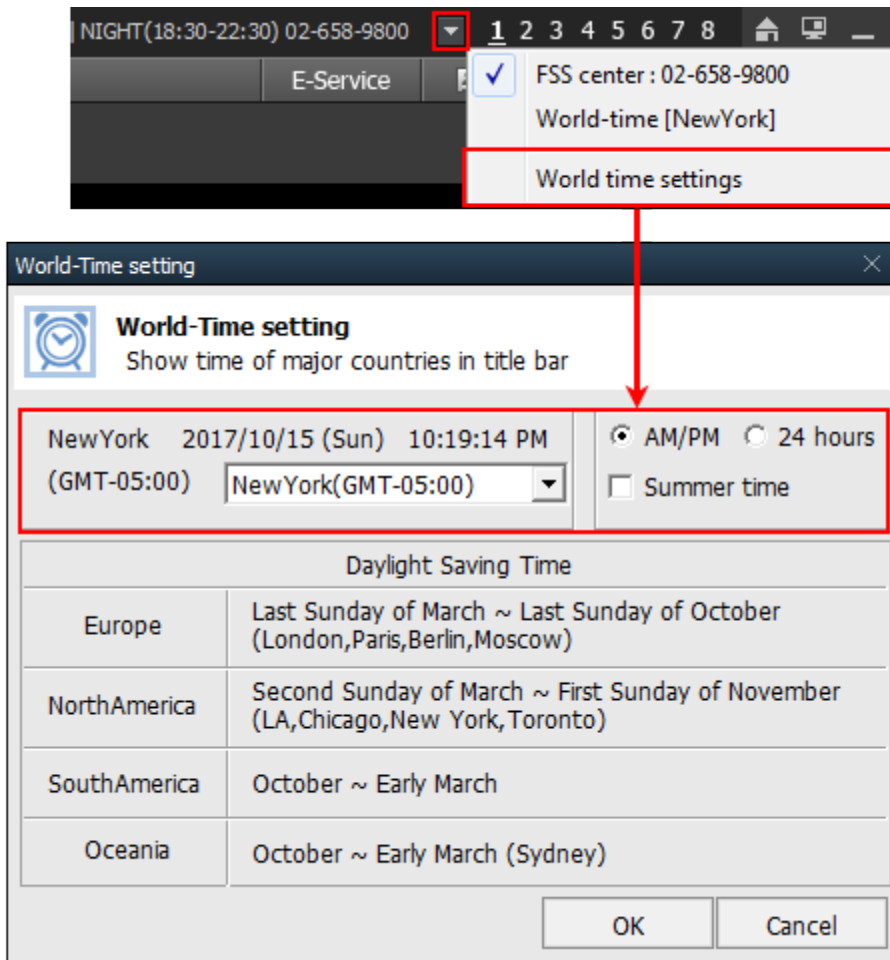








2. Description of Screen

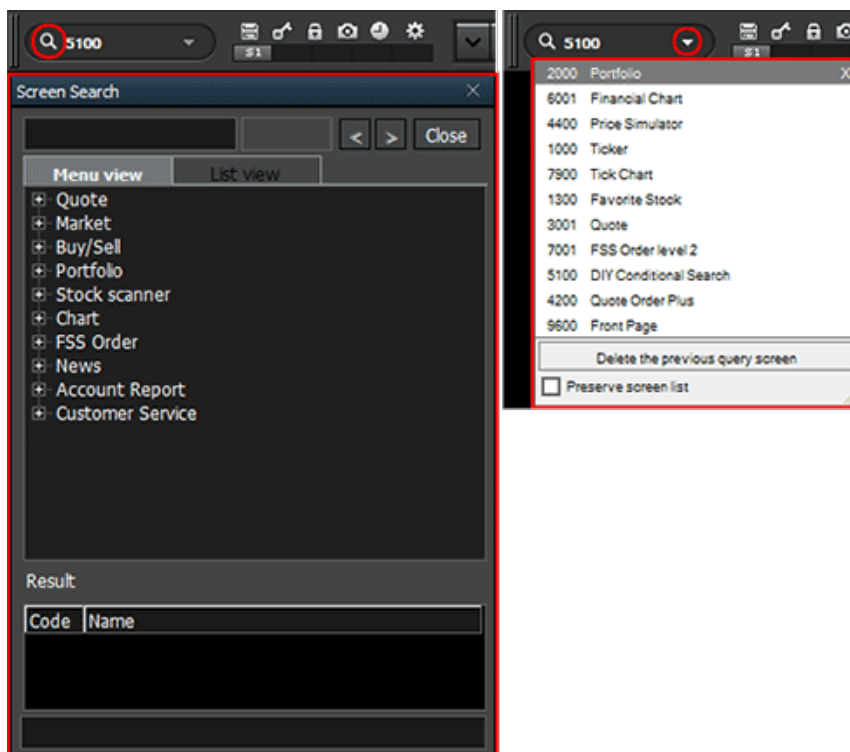
1 Menu Bar



- 1 FSS center call number or world-time can be selected.




- 2 FSS HERO offers 8 virtual screens. Virtual screens are operated as separate screens to show different screens for efficient use.
- 3 Click  button to <https://www.fnsyrus.com/th/home/> page.
When using two or more monitors, click  button to expand the HTS screen to all connected monitors.
- 4 All screens provided on FSS HERO can be found easily from a tree structure.
- 5 Click     buttons to open related websites.
- 6 Screen search and open
Enter name of the screen to easily open the screen through history of screens searched.



7 Function button






Convenient functions like Create saved screen and Management PIN Number are provided

- A** Click  button to open the 'Saved screen management' pop-up window and save current screen composition.

Saved screens can be set by default composition of each screen.

Saved screens can be called easily using shortcut buttons below.




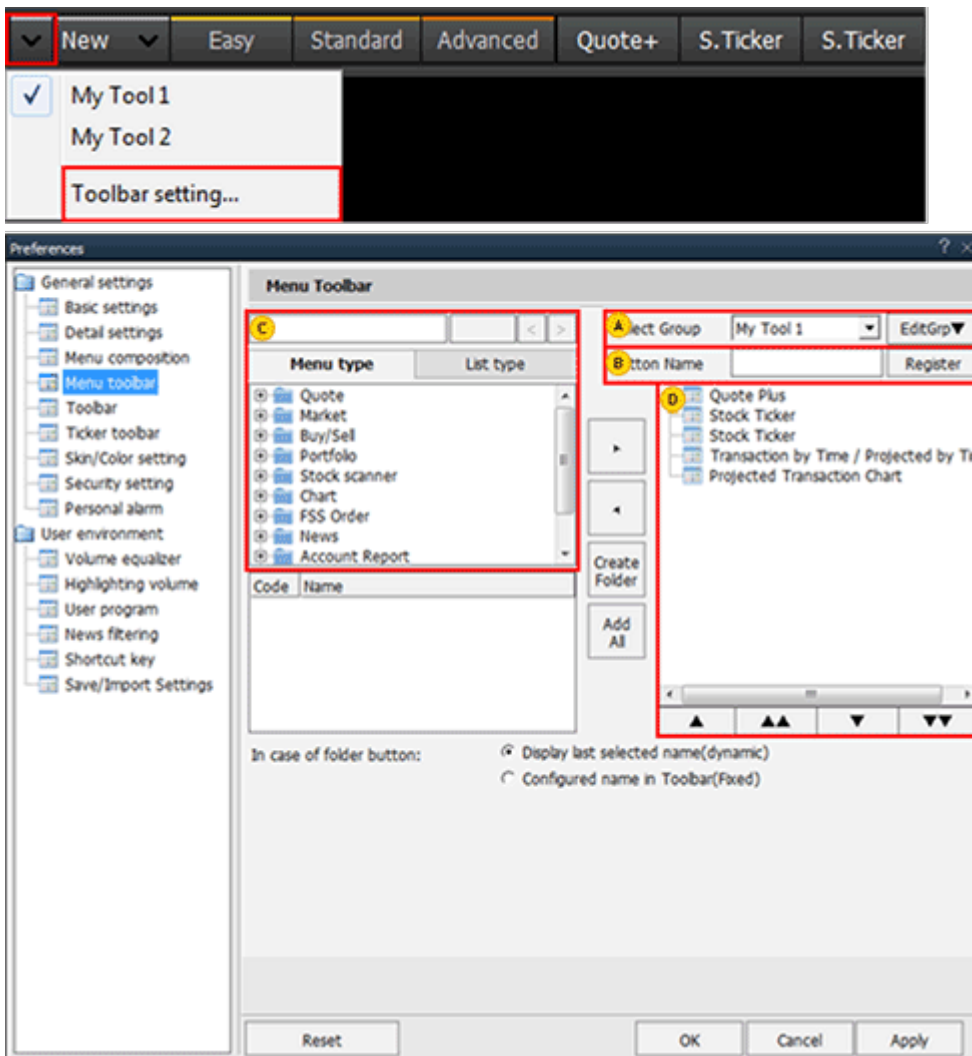
- B** Click  button to open [Preferences -> General settings -> Security setting] on HERO FSS and configure pin number of the user.
- C** If HERO FSS is not used for long time, click  button to minimize HERO FSS and prevent others from using it.
- D** Click  button to capture the current screen on HERO FSS as an image in the designated folder.
- E** Click  button to run the mini clock on the right side of the HERO FSS screen.
- F** Click  button to run [Preferences -> General settings -> Toolbar] menu of HERO FSS and use various function buttons other than basic function buttons provided.

8 Toolbar

A toolbar group can be made by gathering screens that are used most often among screens provided on the main menu.

In addition to default groups provided, the user can create additional toolbar groups.

Click  button to select a saved toolbar and configure toolbar setting.



A To create a new toolbar group, click **EditGrp** button to select 'Resister new group' menu and enter name of the toolbar group.

B Button name of the screen selected in **D** can be changed.

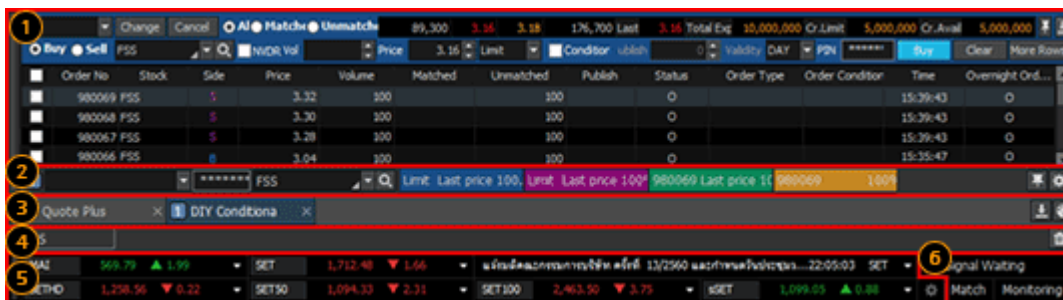
C Search and select screens to be added to the toolbar group or select them from the menu tree.

D This is a list of screens registered on the designated toolbar group

9 Click **15/10/2017 21:51:18** button to run [Preferences -> General settings -> Personal alarm] menu of HERO FSS and configure daily or hourly alarm.

SET: Startup shows current time status of the market.

2 Ticker Bar

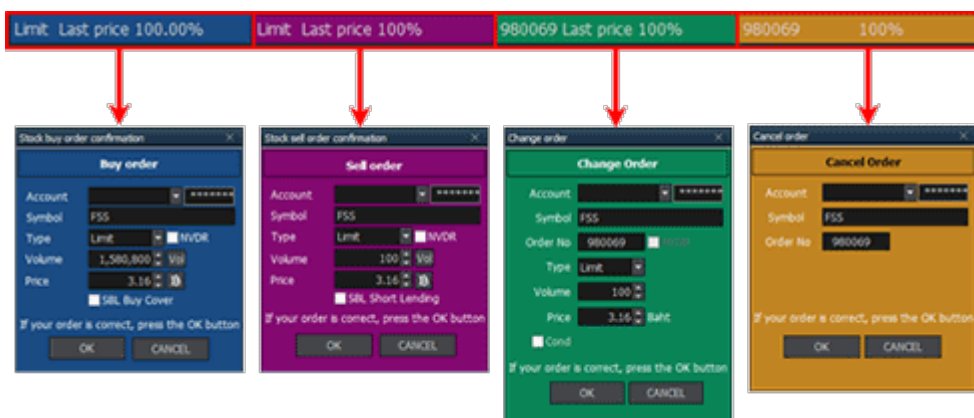


- 1 This is an order area that views order history of a selected account or executes change/cancel order and buy order.

This area can easily place orders without having to use a separate order screen, increasing convenience of trading.

- 2 This is a quick order area that can place orders after than 1 area.

Click button to open the 'Quick order setting' pop-up window and place a quick order according to the designated order conditions by a single click.

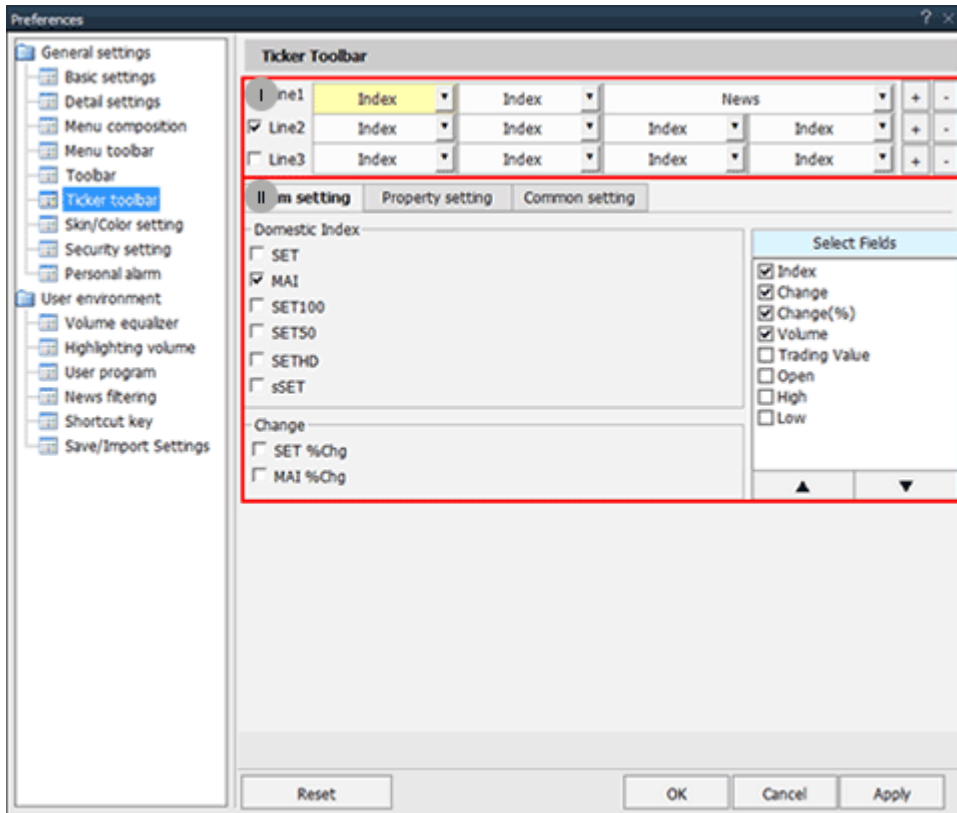


※ Please refer to the section on order screens for detailed method of setting and using order.

- 3 This is a list of screens currently opened on HTS.
This area can place orders quickly and simply without having to use a separate order screen, increasing convenience of trading.
- 4 This is a list of stocks that were entered on the running screen. Click button to delete the list.
- 5 This is a ticker toolbar that provides index and news information selected by the user.
Click button to run [Preferences -> General settings -> Ticker toolbar] menu of HERO FSS and configure the ticker toolbar.

Item setting

Number of lines displayed and items of the ticker toolbar can be configured



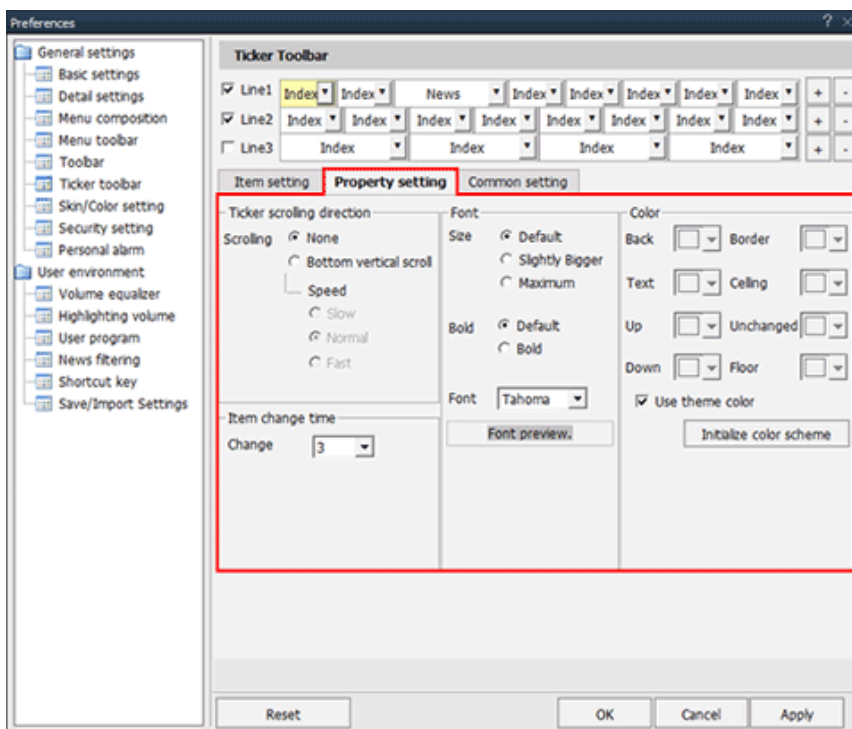
- I Number of lines on the ticker displayed on HTS can be configured.

+

-

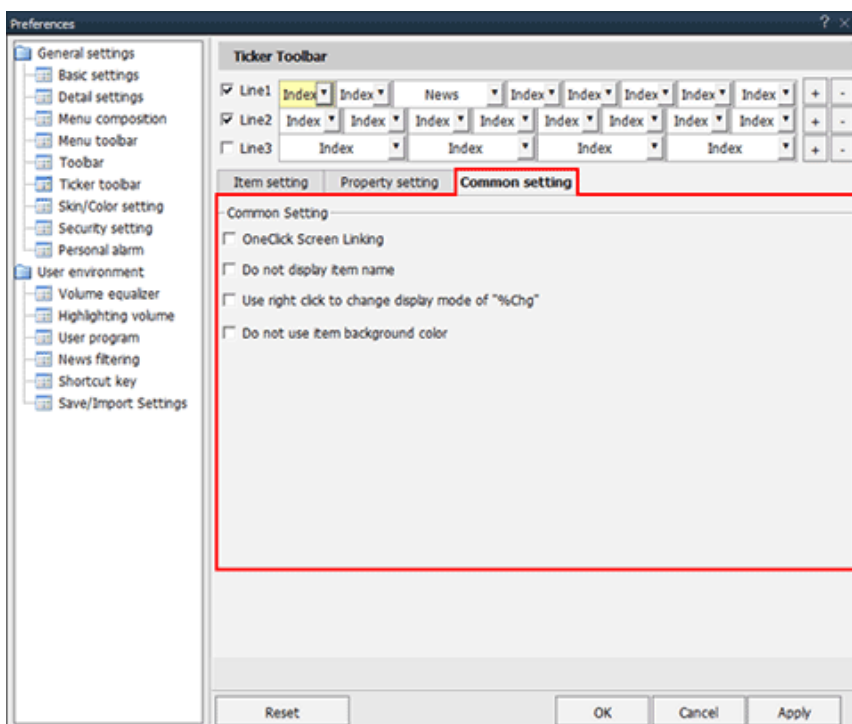
 button on the right side are used to adjust number of items displayed per line. Up to 8 information items can be combined.
- II This is an area to select items provided on the ticker toolbar. Select fields in I (indicated in yellow once selected) and select detailed items.

- B Property setting
 Data scrolling speed, font and color can be selected.



C Common setting

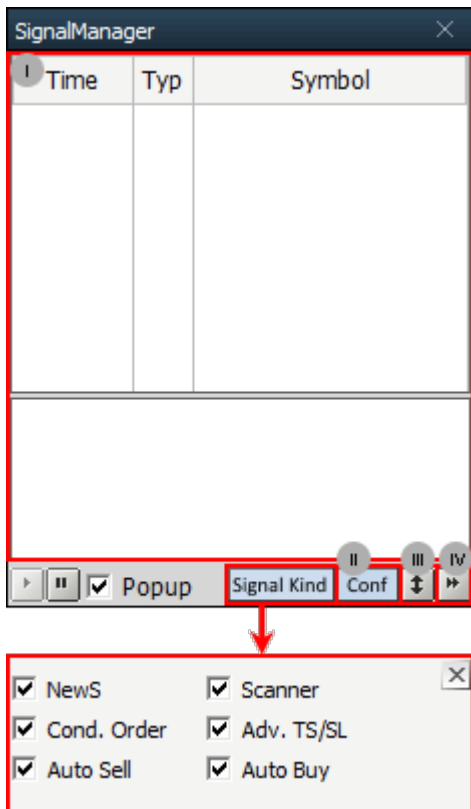
Common setting of the ticker toolbar can be configured.




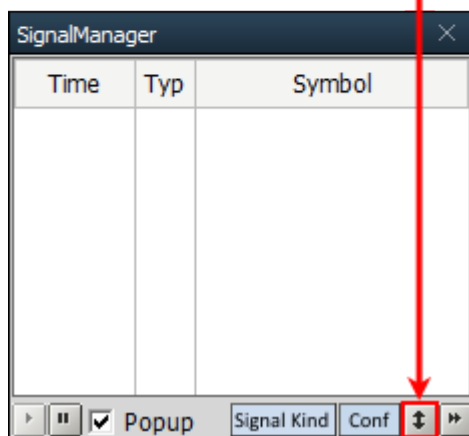
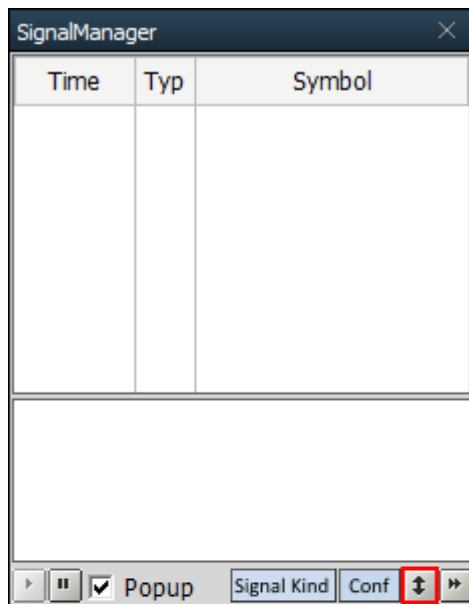
6 Signal Waiting/Match/Monitoring


A Signal Waiting

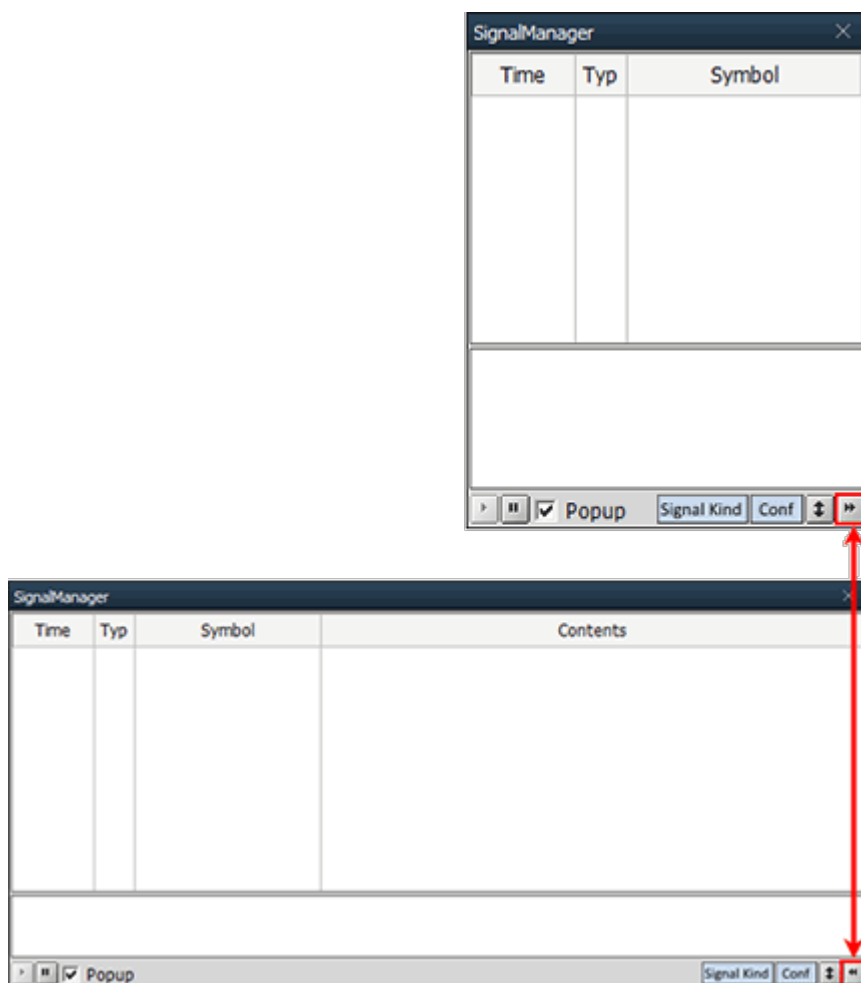
Click **Signal Waiting** button to open the 'Signal Manager' pop-up window and check signals that appear in news and stocks



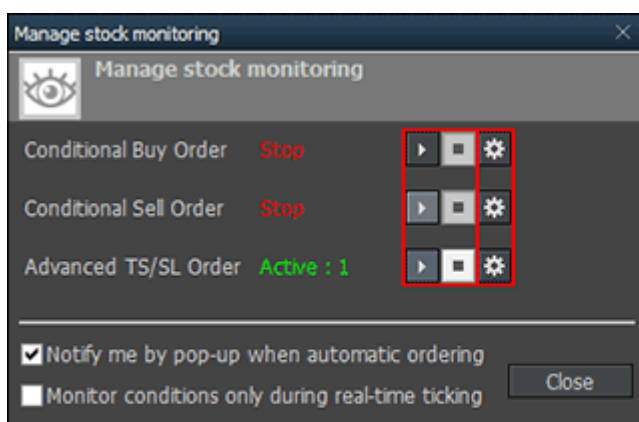
- I Time of signal occurrence, type, symbol and details are provided. Double click the signal list to open the related screen.
- II Click **Conf** button to open the 'Signal Manager Setting' pop-up window and configure Signal Waiting.
The 'Signal Manager Setting' window is divided into Default Setting, Sound Setting, News Setting and Symbol Filtering tabs. The user can configure Signal Waiting as wanted.
- III Click  button to reduce size of the area viewing details below the list.




- IV Click  button to enlarge the 'Signal Manager' window to full size, allowing the user to view details with convenience.



- B** Click **Match** button to open the 'Trading Notification' pop-up window and check Symbol, Order Type, Match Price and Match Volume of orders at a sight.
Click **M Notification** button to configure various settings for the 'Trading Notification' window such as Automatic Hiding Time, Use Sound and Always on Top.
- C** Click **Monitoring** button to open the 'Management stock Monitoring' pop-up window and configure Monitoring Start/Stop settings for Conditional Buy Order, Conditional Sell Order, etc.



Click  button to open a pop-up window and decide monitoring and order conditions to be applied.

Monitoring can be started or stopped.