

[fe02] saveload setting

Save/Load Settings

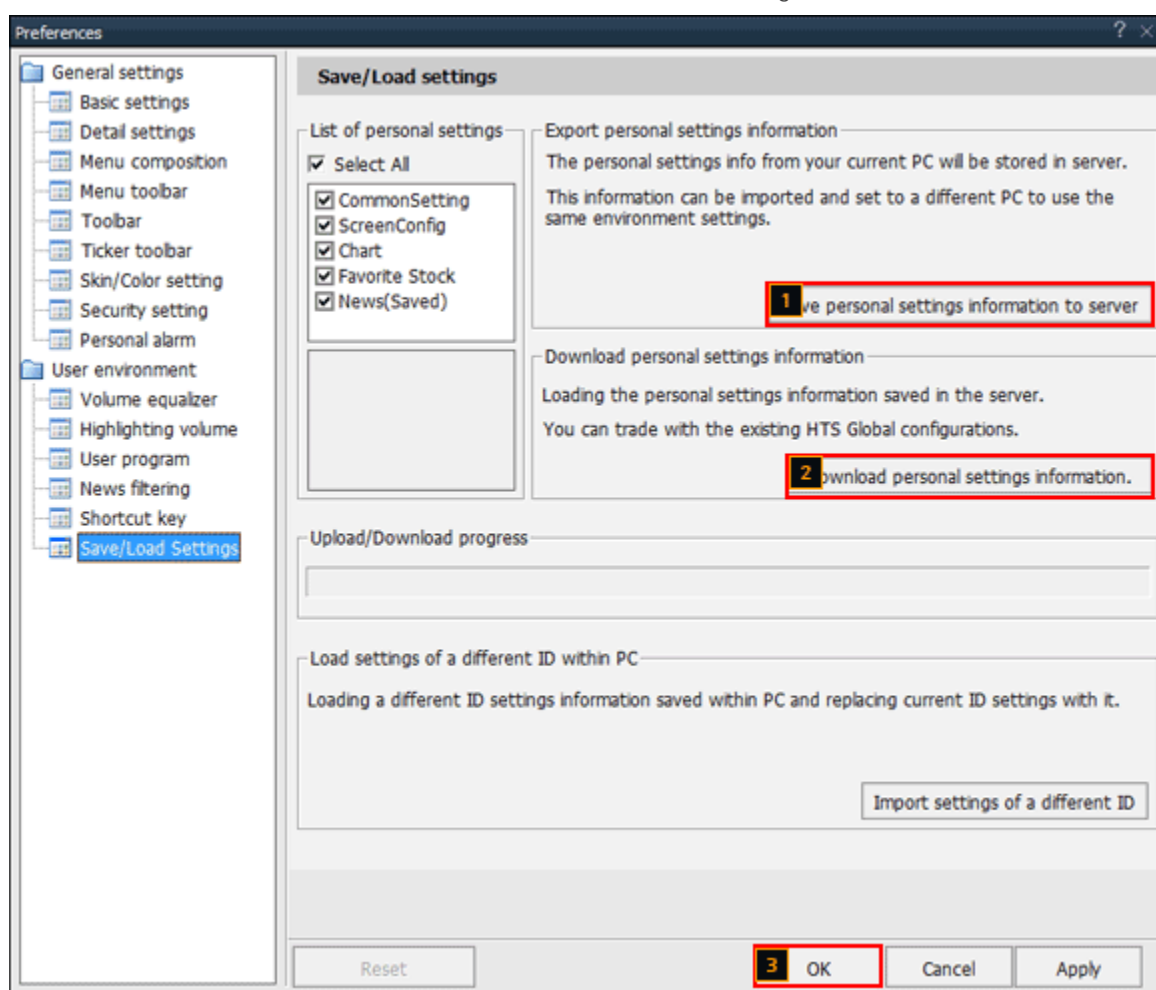
Settings information on the current PC can be loaded and used on another PC.

Personal settings information on a desktop PC can be saved on the FSS server by following instructions below.

Download personal settings information from the server onto a laptop and reconnect to FSS HERO to use settings saved from the desktop PC. Save/Load Settings

2. Description of Screen

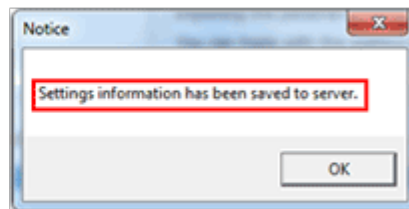
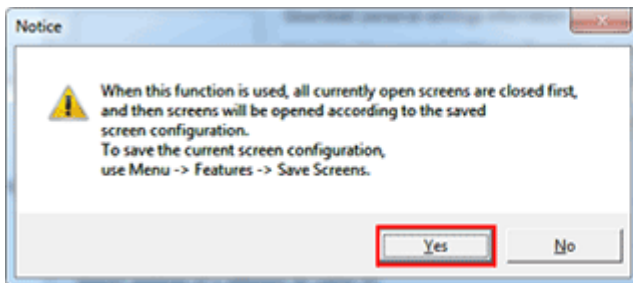
Click [Features → Preferences → User environment → Save/Load setting] on FSS HERO.



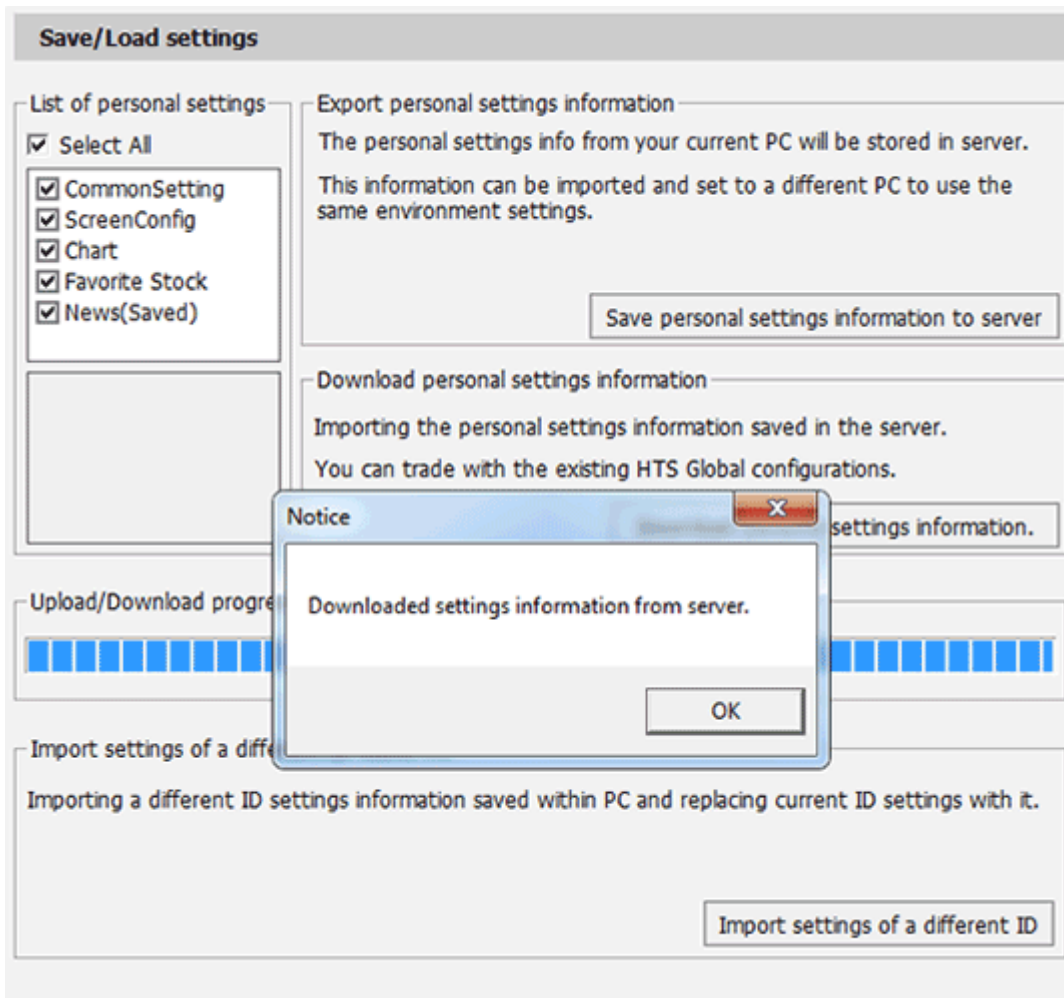
1 Save personal settings information to server

Personal settings information of FSS HERO on the current PC is saved (uploaded) on the FSS server. Personal settings information saved on the FSS server can be loaded and used in different places.

When **Save personal settings information to server** button is clicked, the following pop-up notice appears.



- 2 Download personal settings information
Run FSS HERO on another PC.
Click **Download personal settings information.** button to close all screens and download personal settings information saved on the server.



- 3 Clicking OK button and reconnecting to FSS HERO
Exit and reconnect to FSS HERO to apply settings downloaded from another PC.