

[3000] Quote Plus

1. Overview of Screen

HERO FSS is characterized by strong focus on the user interface, which allows for convenient switching between screens and quick and easy viewing of relevant data.

'[3000] Quote Plus' screen is one of screens that best reflect such characteristic. Beyond simple price view, this screen shows various data that can affect prices of a given stock such as current price and chart of the stock, daily price trend and investor trend. In addition, the user can quickly place 'buy / sell / change / cancel' order or move to other related screens using link button and right mouse button.



2. Description of Screen

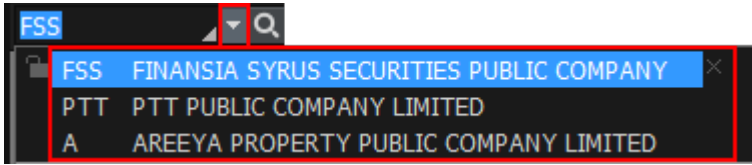
1 Selection of a stock to be viewed. Enter or select a stock to be viewed.



1 Selection of a stock to be viewed

A The user can directly enter a stock to be viewed.

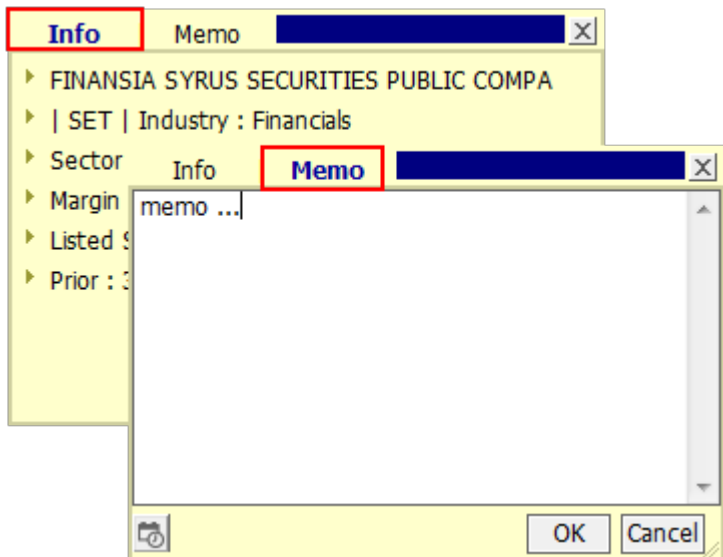
B Click button to open a list of stocks previously viewed.



C Click next to stock name to see 'Info' and 'Memo' for the selected stock.

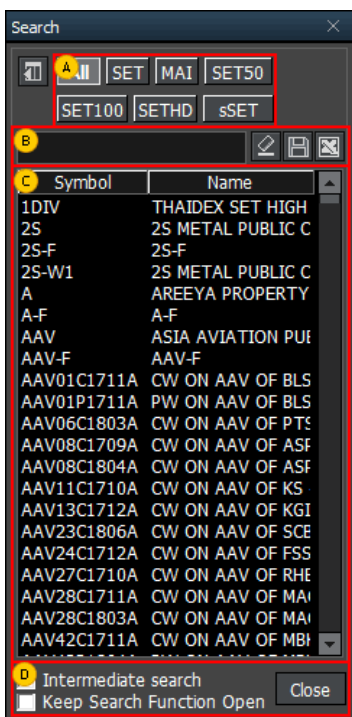
Memo function allows the user to write down opinions and thoughts about a stock. This memo can be checked at any time from other screens. This is a simple user database for stocks in addition to the price viewing of the screen.




Example a stock has memo

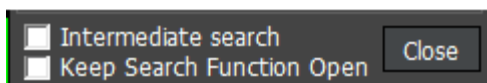
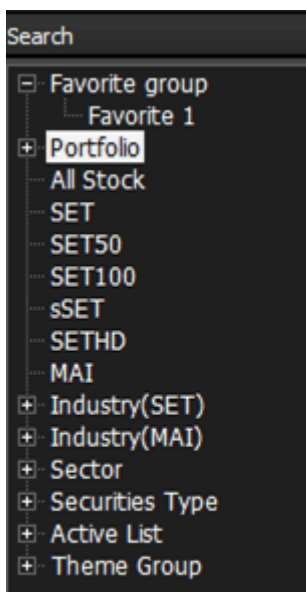


2 Selection of a stock to be viewed through search

Click button to open the 'Search' pop-up window and select a stock to be viewed.

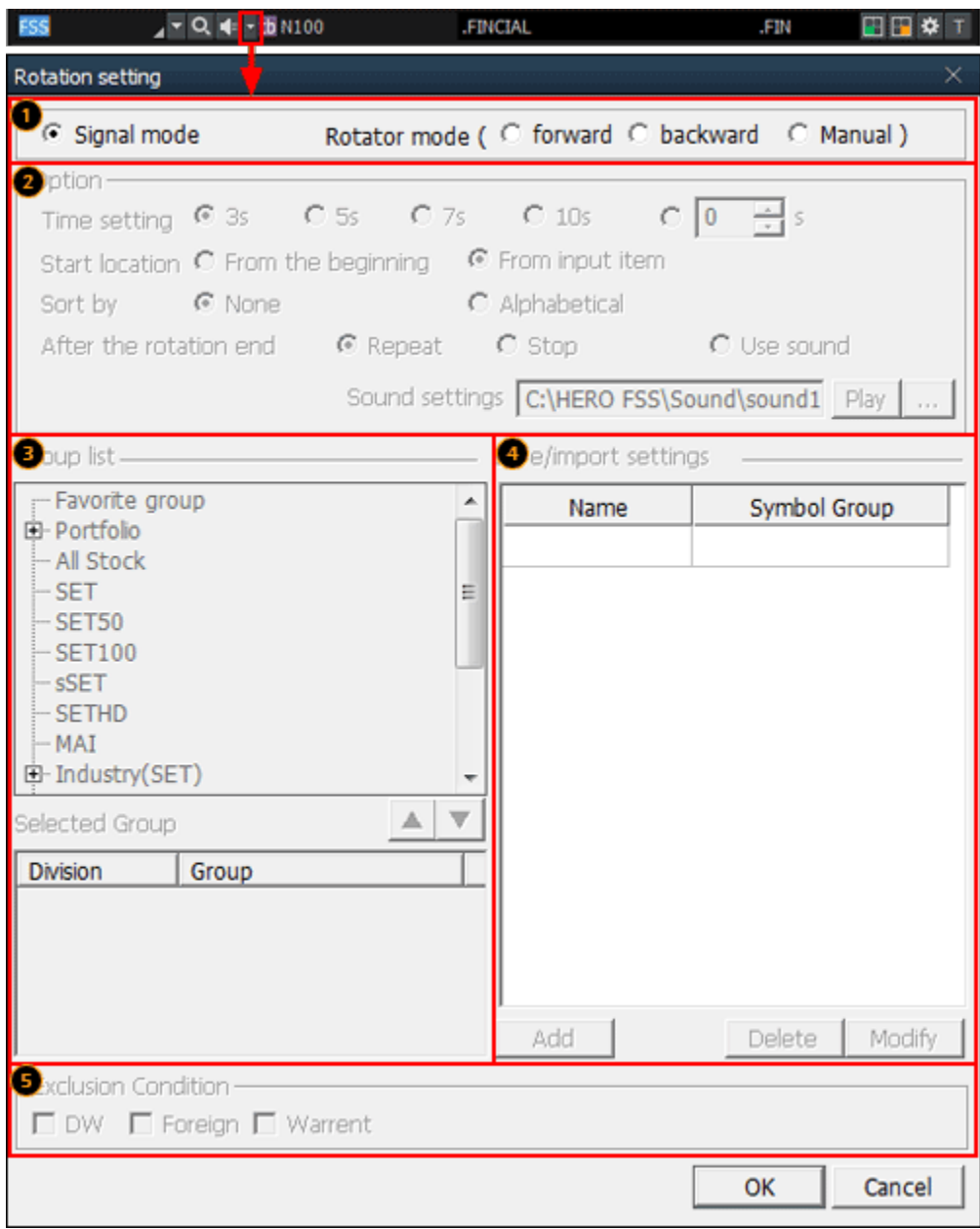


- A** Select a category to be viewed.
- B** Directly enter a stock to be searched and viewed.
 Click  to save the search result as a TXT file on the user's PC.
 Click  to save the search result as an Excel file on the user's PC.
- C** A list of stocks in the category selected in **A** or a list of stocks based on the search results described in **B** is provided.
 User will be selected stocks from menu  on left side the screen.
- Favorite Group
 - Portfolio
 - All Stock
 - SET
 - SET50
 - SET100
 - sSET
 - MAI
 - Industry (SET)
 - Industry (MAI)
 - Sector
 - Securities Type
 - Active List
 - Theme Group



- D** Intermediate Search and Keep Search Function Open functions can be selected.
- Intermediate Search: When searched a stock by alphabet (A-Z), a stock will be shown although where an alphabet is in that position.
 - Keep Search Function: When double clicked at stock, popup stocks search will be always show.

- Signal mode / rotator mode functions
 HERO FSS helps the user view stock price information by providing signal mode / rotator mode functions. Click to set signal mode and rotator mode.



1 Mode selection

A Signal mode

This mode is a general mode that views price information of a stock selected by the user.

B Rotator mode

This is a mode that views price information of multiple stocks according to the conditions set by the user (stock, direction, time, etc.).

- Forward: Price information of the selected stocks is rotated in forward direction of the list.
- Backward: Price information of the selected stocks is rotated in backward direction of the list.
- Manual: The user can manually click to decide rotating direction to view the selected stocks.

2 Stock rotator option

A Time setting: Time of automatic rotation of stocks can be set.


B Start location: A stock can be designated as the starting location on the list of stocks.

C Sort by: Sorting order of the stock list can be set.

D After the rotation end: Operation to be done after the end of rotation of the selected stocks can be set.

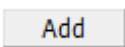
E Sound setting: A wav file on the user's PC can be selected

3 Designation of rotator stock list

Double click a group from the group list for rotator view or click  button to show the selected group in the selected group area at the bottom.


One group or multiple groups can be selected.

Click  button to delete the selected group.

4 After selecting the stock group for rotator view in **C**, click  button to save the selected group.

5 Exclusion condition can be set for the stocks selected for rotator view.

3 Change additional information

Click  button at the top right corner of the screen to change additional information provided at the bottom. Details will be shown as picture below:

Stock Info

Prior	3.46	O
High	3.50	M
Low	3.46	G
Average	3.48	T
Open 1	3.48	H
Open 2		C
Ceiling	4.48	N
Floor	2.44	S
Par	0.10	
Avg 5 D	3.49	
%Open Vol	7.00%	
%Buy Vol	34.66%	
%Sell Vol	58.33%	
Capitdal(M)	930	

Match

3.50	1,000
3.50	5,500
3.48	600
3.46	100
3.46	10,000
3.48	10,000
3.48	10,000
3.48	100
3.48	3,000
3.48	500
3.48	1,300
3.48	100

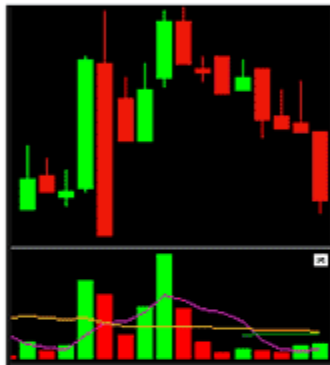
Pivot/Demark

Pivot	
2th Res	12.10
1th Res	12.10
Pivot	12.10
1th Sup	12.10
2th Sup	12.10
Demark	
D Res	12.20
D Sup	12.25
SMA	
5SMA	12.09
10SMA	13.02
20SMA	13.93

%Strength

100	17.39%
100	17.78%
100	18.18%
100	18.60%
100	19.05%
100	19.51%
100	20.00%
100	20.51%
100	20.05%
100	21.62%
100	22.22%
100	23.53%

Chart



[3000] Quote Plus

FSS .FIN

250D High	3.84	-18.75%	25/01/2017	Par	1.60	Mkt. Cap(M)	1,814	EPS	0.40
250D Low	2.40	30.00%	13/10/2016	Capital(M)	930	Shares(T)	581,403	PER	7.15
Intermis	3.10	0.02	-0.02%	P.Volume	20,000	Buy Vol	126,600	Sell Vol	298,600

3.12 ▲ **0.00** **0.00%** **425,200** **7.86%**

Increase	Vol	Bid/offer	Vol	Increase	Time	Proj Price	Change	Volume	Total Volume
%Turnov	0.07%	3.20	408,100	5,000	09:54:47	0	0.00	-25,000	0
Open Vol	20,000	3.18	128,400		09:54:42	3.14	▲ 0.02	-67,000	25,000
Buy Vol	26,600	3.16	149,700		09:53:23	3.14	▲ 0.02	25,000	92,000
Sell Vol	98,600	3.14	50,100		09:50:33	3.14	▲ 0.02	0	63,000
		3.12	20,000		09:48:57	3.14	▲ 0.02	500	63,000
	18,500	3.10	SET		09:45:53	3.14	▲ 0.02	66,500	64,500
	23,200	3.08	Sector .FIN		09:45:21	0	0.00	-30,000	0
	276,500	3.06	Index 2,993.57		09:44:39	3.08	▼ 0.04	0	30,000
	86,700	3.04	Change 4.75		09:44:21	3.08	▼ 0.04	0	30,000
	100,200	3.02	%Chg -0.16%		09:43:12	3.08	▼ 0.04	30,000	30,000
	15,100	12:19:39	756,300	5,000					

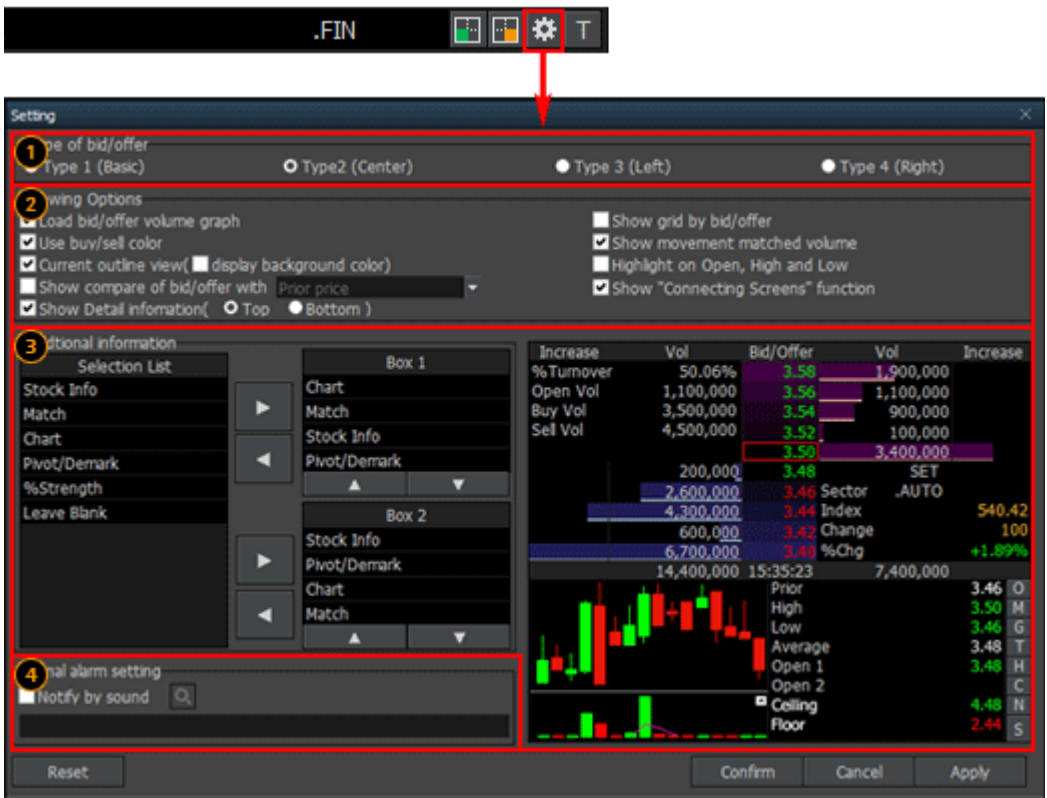
Settings

Prior	3.12	O
High	3.14	M
Low	3.08	G
Average	3.10	T
Open 1	3.10	H
Open 2		C
Ceiling	4.04	N
Floor	2.20	S
Par	1.60	
Avg 5D	3.10	

4 Settings

Current price screens of HERO FSS can quickly recognize prices of stocks through various graphics and colors.

To fully utilize such functions, click button at the top of the screen and select desired options.



1 Type of bid/offer setting

One of 4 types including 'Basic, Center, Left and Right' can be selected according to position of bid/offer data.

Basic Type divides bid and offer into left and right sides and arranges prices vertically. This type can clearly distinguish between bid status and offer status.

Center Type divides bid and offer into left and right sides around the center, allowing for easy analysis of bid and offer information.

Left Type and Right Type align bid/offer information in a line on the left side or right side.

FSS HERO offers different types of bid/offer alignment and additionally provides a graph that shows remaining volume of each bid/offer price. User convenience was maximized to intuitively recognize bid/offer information by providing different bid/offer arrangement types and graph for remaining volume of each bid/offer price.

A Type 1 (Basic)

Increase	Vol	Bid	Offer	Vol	Increase
4,500	23,000	3.10	3.12	20,000	
	33,200	3.08	3.14	50,100	
	76,500	3.06	3.16	49,700	
	86,700	3.04	3.18	28,400	
	00,200	3.02	3.20	08,100	
	19,600	14:21:41		56,300	4,500

B Type 2 (Center)

3.12		0.00	0.00%	425,200	7.86%
Increase	Vol	Bid/Offer	Vol	Increase	
%Turnov	0.07%	3.20	408,100	5,000	
Open Vol	20,000	3.18	128,400		
Buy Vol	126,600	3.16	149,700		
Sell Vol	298,600	3.14	50,100		
		3.12	20,000		
	18,500	3.10	SET		
	233,200	3.08	Sector	.FIN	
	276,500	3.06	Index	2,993.57	
	86,700	3.04	Change	▼ 4.75	
	100,200	3.02	%Chg	-0.16%	
	715,100		12:19:39	756,300	5,000

C Type 3 (Left)

3.12		0.00	0.00%	425,200	7.86%
Offer	756,300	%Turnov	0.07%		
3.20	408,100	Open Vol	20,000		
3.18	128,400	Buy Vol	126,600		
3.16	149,700	Sell Vol	298,600		
3.14	50,100				
3.12	20,000				
3.10	23,000	4,500	SET		
3.08	233,200		Sector	.FIN	
3.06	276,500		Index	2,993.57	
3.04	86,700		Change	▼ 4.75	
3.02	100,200		%Chg	-0.16%	
Bid	719,600	4,500			

D Type 4 (Right)

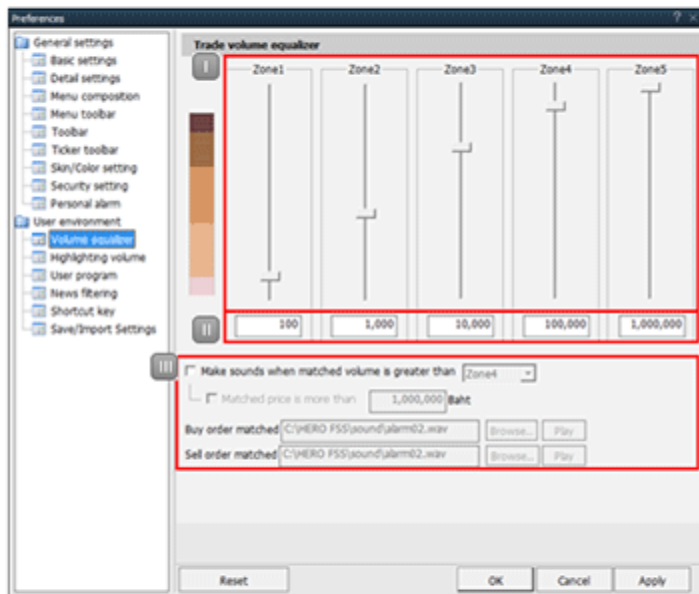
%Turnov	0.07%	756,300	Offer	
Open Vol	20,000	408,100	3.20	
Buy Vol	126,600	128,400	3.18	
Sell Vol	298,600	149,700	3.16	
		50,100	3.14	
		20,000	3.12	
	SET	4,500	23,000	3.10
Sector	.FIN		233,200	3.08
Index	2,993.57		276,500	3.06
Change	▼ 4.75		86,700	3.04
%Chg	-0.16%	4,500	100,200	3.02
		719,600	Bid	

2 Viewing options

- A** Load bid/offer volume graph: Bid/offer volume is displayed as a graph.
- B** Show grid by bid/offer: Bid/offer grid display can be set.
- C** Stock ticker: Stock ticker display can be set. When selected **T** button will be shown screen 1000 (Stock ticker)
- D** Show movement matched volume: Instantaneous match volume equalizer display of (hourly) match tab can be set.

วิธีการตั้งค่าแถบสีสำหรับแจ้งเตือนปริมาณการซื้อขายที่ถูกจับคู่แล้ว (match volume equalizer)

กดเลือก 'Features' บนแถบเมนูหลักของหน้าจอ -> กดเข้าสู่ 'Preferences' -> และกดเลือก 'volume equalizer' เพื่อตั้งค่าการแสดงผลแถบสีสำหรับแจ้งเตือนปริมาณการซื้อขายที่ถูกจับคู่แล้ว

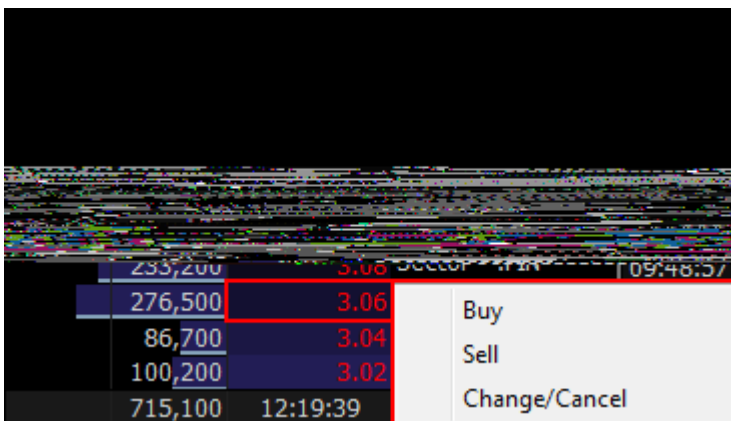


- I กดเลือกระดับการแสดงผลของแถบสี equalizer ในแต่ละระดับ (มี 5 ระดับ)
 - II ใส่ค่าปริมาณหลักที่จับคู่แล้ว (match volume) ในแต่ละระดับที่ต้องการให้แสดงผล
 - III เลือกตั้งค่าการแจ้งเตือนแบบเสียง
- กรณีที่ใช้งานเลือกเสียงแจ้งเตือน โปรแกรมจะเตือนเมื่อรายการส่งคำสั่งซื้อขายถูกจับคู่ เช่น ใส่ค่าราคาที่ถูกจับคู่ 1,000,000 บาท โปรแกรมจะแจ้งเตือนเมื่อราคาที่ถูกจับคู่มากกว่าหรือเท่ากับ 1,000,000 บาท

- E Chart: Chart display and support/resistance display on the chart can be set.
 - F Highlight on open, high and low: Display of highlight on daily open, high and low prices can be set.
 - G Show compare of bid/offer with 'prior price': Percent change can be viewed with prior price/open/high/low condition.
 - H Show connecting screens function: Display of connecting screen button in the bid/offer area can be set. Selection O,M,G,T,H,C,N,S buttons to be also linked that screen.
 - I Show detail information: Location of detailed stock information such as '250D High, 250D Low, PreOpen2, and P/E' provided at the top of the screen can be selected.
- 3 Additional information
- A Additional information provided when button is clicked at the top right corner of the screen can be set. Up to 4 items can be set each for the top and the bottom. Order of items can be changed using buttons or mouse drag & drop.
- 4 Signal alarm setting: Signal alarm setting can be set by selecting a sound to be used.

5 Bid/offer area order function

- 1 On the bid/offer window of the current price screen, put the mouse cursor on a bid/offer and click the right mouse button to open an order menu for 'Buy, Sell, Change/Cancel'.
Select an order item to automatically enter the selected price into '[4000] Mini Order' screen, which allows for fast order placement with minimal time and route.



6 Additional / special functions on right mouse button

FSS HERO has maximized user convenience by providing various additional and special functions when the right mouse button is clicked on the screen

- 1** Registering on the current screen toolbar(C)
Select this option to register the current screen on the main screen toolbar.
- 2** Standalone(D)
Select this option to recognize the current screen as a standalone window and freely move it out of the FSS HERO frame.
- 3** Show on all virtual screen(V)
Select this option to show the current screen on all virtual screens in use.
- 4** Show the title bar(B)
The title bar at the top of the screen can be shown or hidden.
- 5** Send to Excel(X)
Data on the current screen can be sent to the Excel program. Data generated using 'Send to Excel' function is not saved. Data must be saved before closing the Excel program.
- 6** Save as CSV(S)
Data viewed are saved as a CSV file of Excel. Click this menu, enter saving location and name, and click 'Save' button to save data.

Description of Screen



1 Detail information

Select a stock to view detailed information about the stock such as 250-day high/low, par, capital (M), P. volume, EPS, and PER.

Click **250D High** to select an item among 250-day high/low and year high/low.

Especially, this screen provides rotator view function, group price view, and memo function. The memo function adds a simple user database for each stock.

2 Bid and offer window

Bid/offer and additional information of the stock can be viewed such as Last price, Change, %Change Total volume of Buy/Sell orders, %Previous

FSS HERO displays remaining bid/offer order volume as a bar graph so that remaining volume of each bid/offer price can be determined intuitively.

Additional information can be changed by clicking button at the top right corner of the screen. Click button to decide detailed settings on the 'setting' screen

1 Connecting screens function

- A** **O**: '[4000] Mini Order' screen is popped up to place an order.
- B** **M**: '[1100] Most Active' screen is popped up to view stocks most actively transacted during the day.
- C** **G**: '[1101] Top Gain / Loss' screen is popped up to view top gain/loss stocks compared to previous day.
- D** **T**: '[3002] Stock Ticker' screen is popped up to view matching status of stocks on a mini screen.
- E** **H**: '[3003] Historical Price' screen is popped up to view daily stock price status.
- F** **C**: '[6000] Technical Chart' screen is popped up to offer technical analysis of the stock.

G N : '[8000] Market News' screen is popped up to view various news related to the stock.

H S : '[5000] FSS Conditional Scanner' screen is popped up to offer general analysis of the stock.

3 Investor/Matched/Chart/Daily/Projected

Use the tabs at the top to view 'Investor, Matched, Chart, Daily, Projected' information of the stock. Match equalizer function provided under Matched tab is a function that displays recently matched volume using an equalizer, which allows the user to intuitively understand momentary buy/sell strength.

Investor	Matched	Chart	Daily	Projected
Time	Price	Change	Volume	%Strength
12:14:00	3.12	◀ 0.00	50,000	42.40%
11:28:11	3.14	▲ 0.02	2,000	50.93%
11:28:11	3.12	◀ 0.00	5,000	50.12%
11:28:11	3.12	◀ 0.00	4,000	48.11%
11:28:11	3.12	◀ 0.00	9,900	46.50%
11:21:00	3.12	◀ 0.00	100	42.52%
11:16:27	3.10	▼ 0.02	100	42.48%
11:05:17	3.08	▼ 0.04	16,400	42.49%
11:03:58	3.10	▼ 0.02	3,600	45.50%
11:01:06	3.10	▼ 0.02	6,400	46.21%
11:01:06	3.10	▼ 0.02	500	47.55%
11:01:06	3.10	▼ 0.02	1,000	47.65%
11:01:06	3.10	▼ 0.02	22,100	47.87%
10:54:50	3.10	▼ 0.02	2,900	53.20%
10:54:50	3.10	▼ 0.02	100	53.99%
10:42:57	3.10	▼ 0.02	300	54.02%
10:31:22	3.10	▼ 0.02	100	53.86%
10:31:22	3.10	▼ 0.02	500	53.81%
10:31:21	3.10	▼ 0.02	3,500	53.55%