

## [1300] Favorite Stock\_0.9

### 1. Overview of Screen

The favorite stock screen of FSS HERO has the following characteristics.



Flags	S	Stock	Last	Change	%Chg	Total Vol
tb		FSS	3.12	0	0%	425,200
		1DIV	12.20	0	0%	32,400
		A	6.55	0	0%	30,000
		A-F	3.00	0	0%	0
		AAV	6.35	0.05	0.78%	39,835,000
		AAV-F	6.60	0	0%	0
		AAV01C1711	0.34	0	0%	7,029,200
		AAV01P1711	0.33	0.01	2.94%	3,572,800
		AAV06C1803	0.45	0	0%	452,000
		MONTRI	6.10	0	0%	0
		2S	4.76	0	0%	246,600
		2S-W1	0.97	0	0%	1,614,900
		2S-F	1.90	0	0%	0
		A-F	3.00	0	0%	0
		AJ	14.40	0	0%	106,900
		AH	24.90	0.10	0.40%	171,600
		AAV-F	6.60	0	0%	0
		ABICO	9.80	0.10	1.01%	226,300
		ABICO-F	6.00	0	0%	0
		ACAP-F	3.50	0	0%	0
		ACC-F	0	0	0%	0
		ADAM-F	4.00	0	0%	0
		ADAM	14.00	0	0%	0
		ADVANC-F	190.50	5.50	2.81%	100
		ACC	0.52	0.01	1.89%	25,900
		ACC-W1	0.13	0.01	7.14%	150,100
		ADVANC	193.50	0.50	0.26%	2,937,400
		AIT	28.00	0.25	0.90%	102,700
		AEC-W4	0.17	0.01	6.25%	34,300
		AEC	0.59	0.01	1.72%	1,077,400

### 2. Description of Screen

- In addition to favorite groups set by the user, various stock data provided on FSS HERO such as major stocks can be viewed without designating them as favorites.
- The user can conveniently move between favorite groups using these buttons.

- 3** Rotator view of favorite stocks is a function that can view overall price status of favorite groups registered by the user.
- 4** A stock can be added to favorite stocks simply by entering it.
- 5** 'View settings' for favorite stocks can be saved as templates. Each template saves the favorite group viewed last and field values.
- 6** Stock category and flags of each stock can be found

Flag	Name	Meaning
SP	Suspend flag	Security (stock) that has been prohibited to be traded (buy/sell).
Sp	Split	Security that par value has been changed.
ST	Stabilized	Security during performing stabilization.
DS	Designated security	Security that can be traded (buy/sell) using cash only.
ds*	x	Similar to "DS" but broker is the one who sets this flag.
Ne	News	SET has announced news regarding this security.
NP	Notice pending	SET is waiting for requesting this security information from the company.
NR	Notice received	SET has received this security information from the company.
XA	Excluded Dividend and Right	Buyer has no rights in receiving dividend/interest is not allowed to reserve any new stocks of this security.
XD	Excluded Dividend	Buyer has no rights to receive dividend of the security.
XI	Excluded Interested	Buyer has no rights to receive interest of the security.
XM	Excluded Meeting	Buyer has no rights to attend shareholder meeting.
XR	Excluded Right	Buyer has no rights to reserve new stock of the right offering of the security.
XS	Excluded Short-Term Warrant	Security is issuing short-term warrant.
XN	Excluding capital return	Buyer who buys the security during XN flag is shown is prohibited from capital return.
XB	Excluding Other Benefit	Buyer who buys the security during XB flag is shown is excluding from the following rights: 1. Buying common share issuing by the company to normal people. 2. Buying the preferred stock. 3. Buying common share issuing by the company to preferred stock holder. 4. Buying warrant and warrant of right offering that allows rights transferred of affiliates.
NC	Non-Compliance	Security of the listed company that might be withdrawn.
NPG	Non-Compliance Group	Company during restoring situation from bankruptcy.
A	NVDR-all Halt	Prohibit to trade (buy/sell) NVDR stock.
B	NVDR-buy Halt	Prohibit to buy NVDR stock.
C	Compliance	This security has been listed that might be removed from SET.
H	Halt	Security that has been temporarily prohibited from trading (buy/sell).
E	Exercise Halt	This security has been prohibited to be converted to common stock.
S	NVDR-sell Halt	Prohibit to trade (buy/sell) NVDR stock.
T	Halt Thai Trust Fund	Prohibit trading this security with Thai Trust Fund.

X	NVDR-buy Halt & TTF Halt	Prohibit to buy NVDR stock and prohibit trading(buy/sell) TTF.
Y	NVDR-sell Halt & TTF Halt	Prohibit to sell NVDR stock and prohibit trading(buy/sell) TTF.
Z	NVDR Halt & TTF Halt	Prohibit to trading(buy/sell) NVDR stock and prohibit trading(buy/sell) TTF.
tb	Turnover list Broker	Broker announced that this security can be bought using cash balance account only.
t1	Turnover list SET level1	The security that SET announced to be bought with cash balance account only.
t2	Turnover list SET level2	The security that SET announced to be bought with cash balance account only and is not allowed to be collateral.
t3	Turnover list SET level3	The security that SET announced to be bought with cash balance account only and is not allowed to be collateral and net settlement of the security is not allowed.

Flag Abbreviation	Meaning
Ne	News
Sc	Realtime Conditional Search
Co	Conditional Order
Ad	Advanced TS/SL order
AS	Buy and Auto Sell
AB	Sell and Auto Buy

※ Color of flags is green in case of ordinary flags, red (purple) in case of sell flags and blue (green) in case of buy flags. Sell or buy flags only appear in news when news title or content includes a term defined as a criterion for judging sell/buy. Such trading flag terms can be configured under 'News Settings' of 'Flag Manager Settings'.

### 3. It is now more convenient to copy stocks and move between favorite groups

Click the mouse button on a stock name and drag & drop it onto another favorite group to add the stock to the corresponding favorite group. In this case, the stock will exist both in its original favorite group and new favorite group

Flags	S	Stock	Last	Change	%Chg	Total Vol
		FSS	3.12	0	0%	425,200
		10IV	12.20	0	0%	32,400
		A	6.55	0	0%	30,000
		A-F	3.00	0	0%	0
		AAV	6.35	0.05	0.78%	39,835,000
		AAV-F	6.60	0	0%	0
		AAV01C1711	0.34	0	0%	7,029,200
		AAV01P1711	0.33	0.01	2.94%	3,572,800
		AAV06C1803	0.45	0	0%	452,000
		MONTRI	6.10	0	0%	0
		2S	4.76	0	0%	246,600
		2S-W1	0.97	0	0%	1,614,900
		2S-F	1.90	0	0%	0
		A-F	3.00	0	0%	0
		AJ	14.40	0	0%	106,900
		AH	24.90	0.10	0.40%	171,600
		AAV-F	6.60	0	0%	0
		ABICO	9.80	0.10	1.01%	226,300
		ABICO-F	6.00	0	0%	0
		ACAP-F	3.50	0	0%	0
		ACC-F	0	0	0%	0
		ADAM-F	4.00	0	0%	0
		ADAM	14.00	0	0%	0
		ADVANC-F	190.50	3.50	2.81%	100
		ACC	0.52	0.01	1.89%	25,900
		ACC-W1	0.13	0.01	7.14%	150,100
		ADVANC	190.50	0.50	0.26%	2,937,400
		AIT	28.00	0.25	0.90%	102,700
		AEC-W4	0.17	0.01	6.25%	34,300
		AEC	0.59	0.01	1.72%	1,077,400

While pressing Shift key on the keyboard, click the mouse button on a stock name and drag & drop it onto another favorite group to add the stock to the corresponding favorite group. In this case, the stock will be deleted from its original favorite group.

#### 4. Multi Select drag function has been improved.

- Click the mouse button while pressing Ctrl key on the keyboard to select multiple stocks to be moved/copied on the favorite stock screen. Drag & drop the selected stocks to copy them. Drag & drop while pressing Shift key to move multiple stocks at once.

- Using Ctrl key

1 [1300] Favorite Stock - Favorite 01

01 Favorite 01

SYMBOL Proj. 1 2 3

1 2 3 4 5 6 7 8 9 Field

Flags	S	Stock	Last	Change	%Chg	Total Vol
		FSS	3.16 ▼	0.02	0.63%	96,800
		BANPU	17.80 ▼	0.10	0.56%	59,999,500
		BDMS	21.10 ▲	0.20	0.96%	32,448,700
		BJC	53.75 ▼	0.75	1.38%	5,316,400
N		BLA	43.75 ▼	0.50	1.13%	2,803,300
N		BH	218.00 ▲	5.00	2.35%	1,668,200
		BJC	53.75 ▼	0.75	1.38%	5,316,400
N		BLA	43.75 ▼	0.50	1.13%	2,803,300
		BPP	29.75 ◀▶	0	0%	10,417,300
SP NC		AI	1.52 ◀▶	0	0%	0
SP		AI-F	12.00 ◀▶	0	0%	0
		AIT	28.00 ◀▶	0	0%	314,200
		AIT-F	24.50 ◀▶	0	0%	0
		AJ	13.70 ◀▶	0	0%	577,800
		AJ-F	12.30 ◀▶	0	0%	0
		AJA	0.61 ▼	0.02	3.17%	18,903,600
		.AGRI	240.30 ▼	0.49	0.20%	26,145
		.AUTO	560.43 ▲	3.30	0.59%	26,990

☐ Favorites  
☒ Favorite 01  
☐ Favorite 02  
☐ All Stock  
☐ SET  
☐ SET50  
☐ SET100  
☐ sSET  
☐ SETHD  
☐ MAI  
☐ Industry(SET)  
☐ Industry(MAI)  
☐ Sector  
☐ Securities Type  
☐ Index  
☐ Sector Index  
☐ Industry Index(SET)  
☐ Industry Index(MAI)  
☐ Portfolio  
☐ Active List  
☐ Theme Group

2 Using Shift key

[1300] Favorite Stock - Favorite 01

01 Favorite 01 SYMBOL Proj. 1 2 3

1 2 3 4 5 6 7 8 9 Field

Flags	S	Stock	Last	Change	%Chg	Total Vol
		FSS	3.16 ▼	0.02	0.63%	96,800
		BANPU	17.80 ▼	0.10	0.56%	59,999,500
		BDMS	21.10 ▲	0.20	0.96%	32,448,700
		BJC	53.75 ▼	0.75	1.38%	5,316,400
N		BLA	43.75 ▼	0.50	1.13%	2,803,300
N		BH	218.00 ▲	5.00	2.35%	1,668,200
		BJC	53.75 ▼	0.75	1.38%	5,316,400
N		BLA	43.75 ▼	0.50	1.13%	2,803,300
		BPP	29.75 ◀▶	0	0%	10,417,300
SP NC		AI	1.52 ◀▶	0	0%	0
SP		AI-F	12.00 ◀▶	0	0%	0
		AIT	28.00 ◀▶	0	0%	314,200
		AIT-F	24.50 ◀▶	0	0%	0
		AJ	13.70 ◀▶	0	0%	577,800
		AJ-F	12.30 ◀▶	0	0%	0
		AJA	0.61 ▼	0.02	3.17%	18,903,600
		.AGRI	240.30 ▼	0.49	0.20%	26,145
		.AUTO	560.43 ▲	3.30	0.59%	26,990

- 2 When linking multiple stocks, select multiple stocks and select the screen to link stocks. The selected screen will be changed to MXN based on the number of stocks selected.

[1300] Favorite Stock - Favorite 01

01 Favorite 01 SYMBOL Proj. 1 2 3

1 2 3 4 5 6 7 8 9 Field

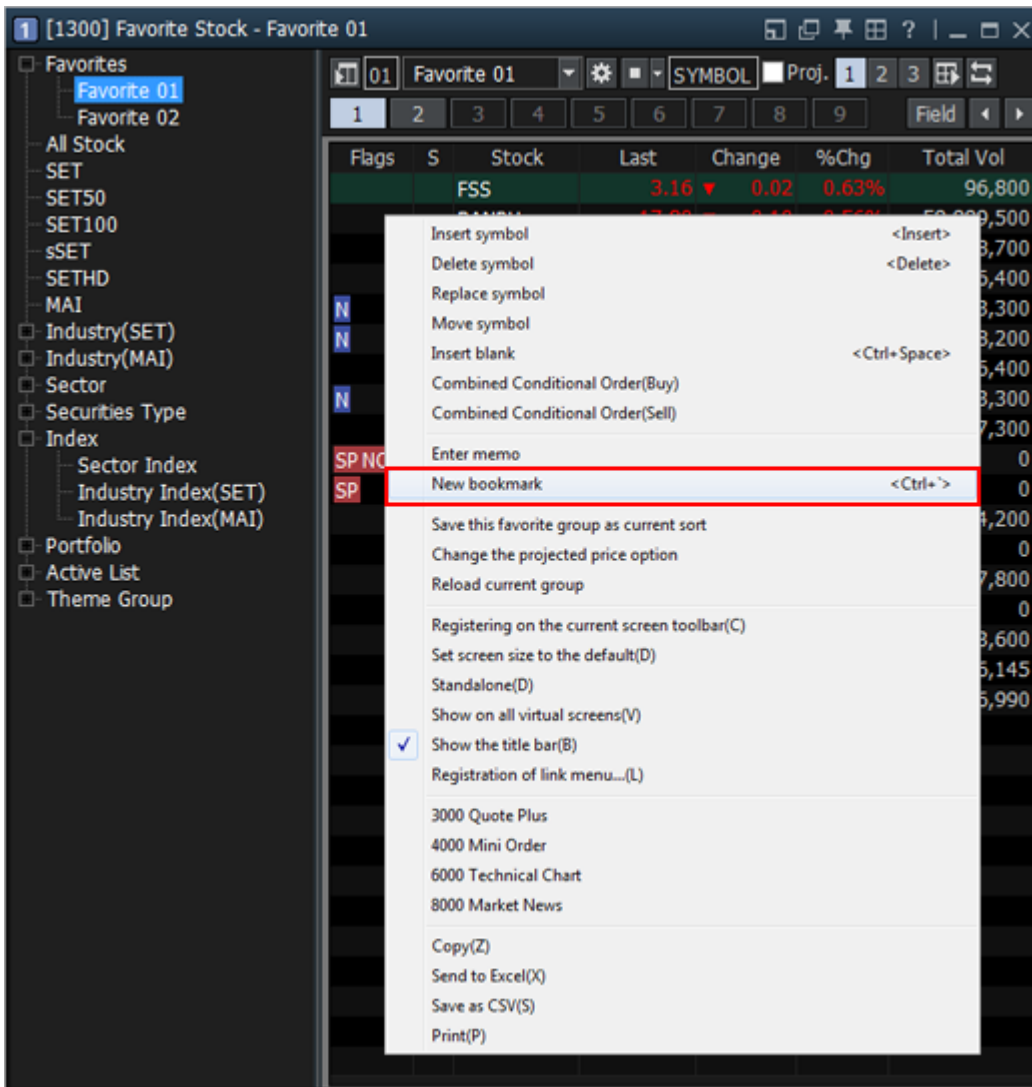
Flags	S	Stock	Last	Change	%Chg	Total
		FSS	3.16 ▼	0.02	0.63%	96,800
		BANPU	17.80 ▼	0.10	0.56%	59,999,500
		BDMS	21.10 ▲	0.20	0.96%	32,448,700
		BJC	53.75 ▼	0.75	1.38%	5,316,400
N		BLA	43.75 ▼	0.50	1.13%	2,803,300
N		BH	218.00 ▲	5.00	2.35%	1,668,200
		BJC	53.75 ▼	0.75	1.38%	5,316,400
N		BLA	43.75 ▼	0.50	1.13%	2,803,300
		BPP	29.75 ◀▶	0	0%	10,417,300
SP NC		AI	1.52 ◀▶	0	0%	0
SP		AI-F	12.00 ◀▶	0	0%	0
		AIT	28.00 ◀▶	0	0%	314,200
		AIT-F	24.50 ◀▶	0	0%	0
		AJ	13.70 ◀▶	0	0%	577,800
		AJ-F	12.30 ◀▶	0	0%	0
		AJA	0.61 ▼	0.02	3.17%	18,903,600
		.AGRI	240.30 ▼	0.49	0.20%	26,145
		.AUTO	560.43 ▲	3.30	0.59%	26,990

3001 Quote  
3002 Stock Ticker  
6002 Tick Chart



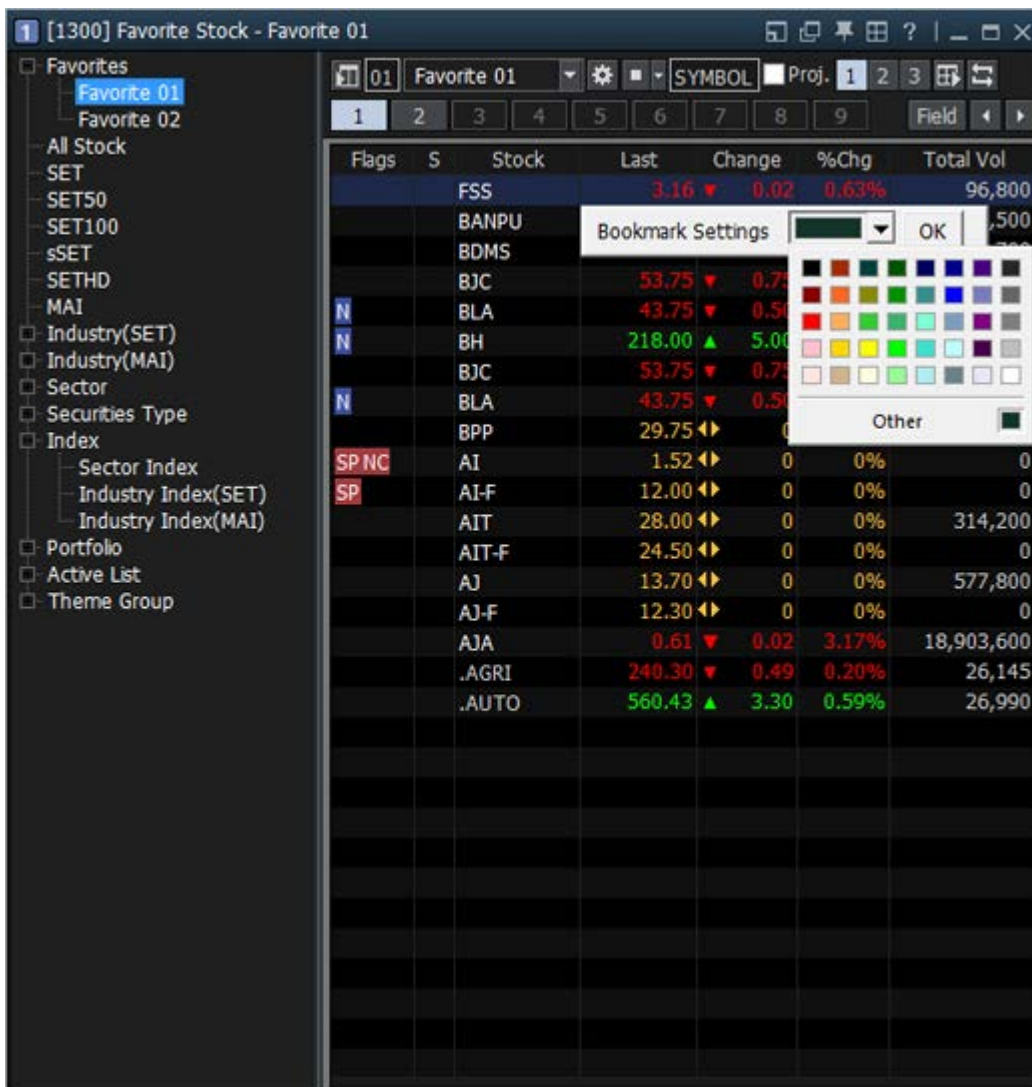
## 5. A bookmark function is provided to display specific stocks within a favorite group.

- 1 Place the mouse cursor on a stock to be bookmarked, press the right mouse button and click 'New Bookmark'. The bookmarked stock will be displayed in different background color compared to other stocks.

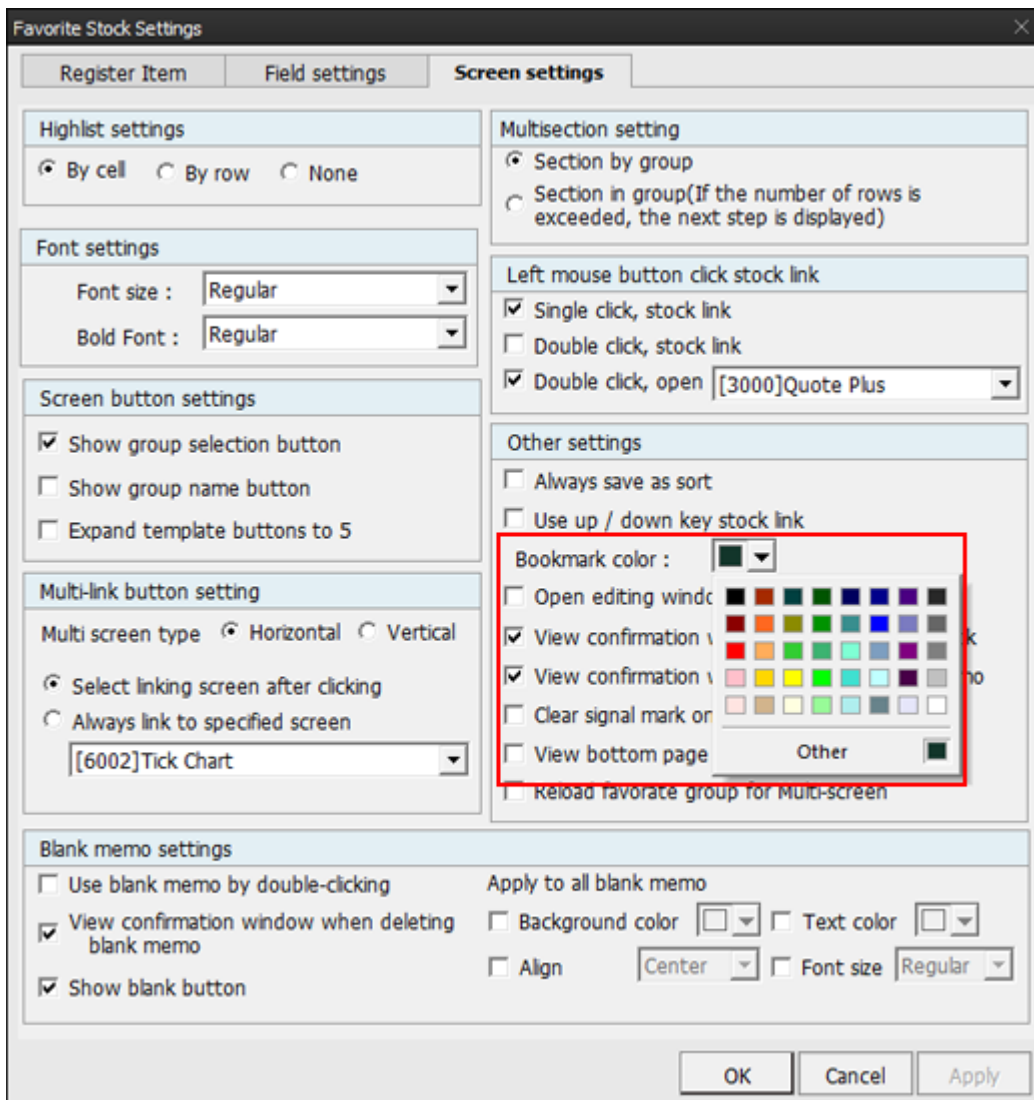


- 2 To change bookmark color, place the mouse cursor on a bookmarked stock, click the right mouse button and select 'Change Bookmark Color'.



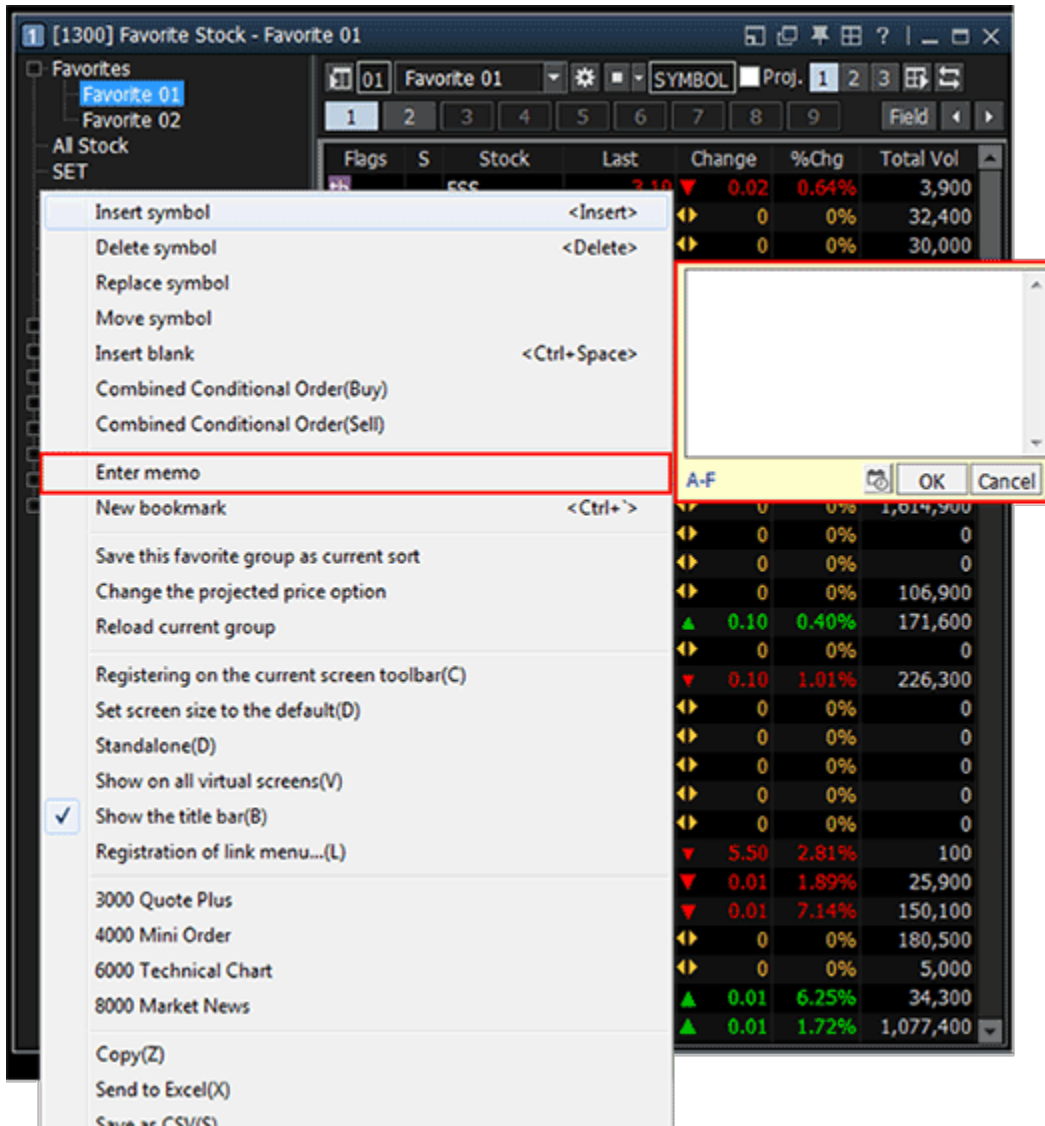


- 3 The user can designate default bookmark color. Select [Register→ Screen Settings → Default Bookmark Color] at the top to do so.

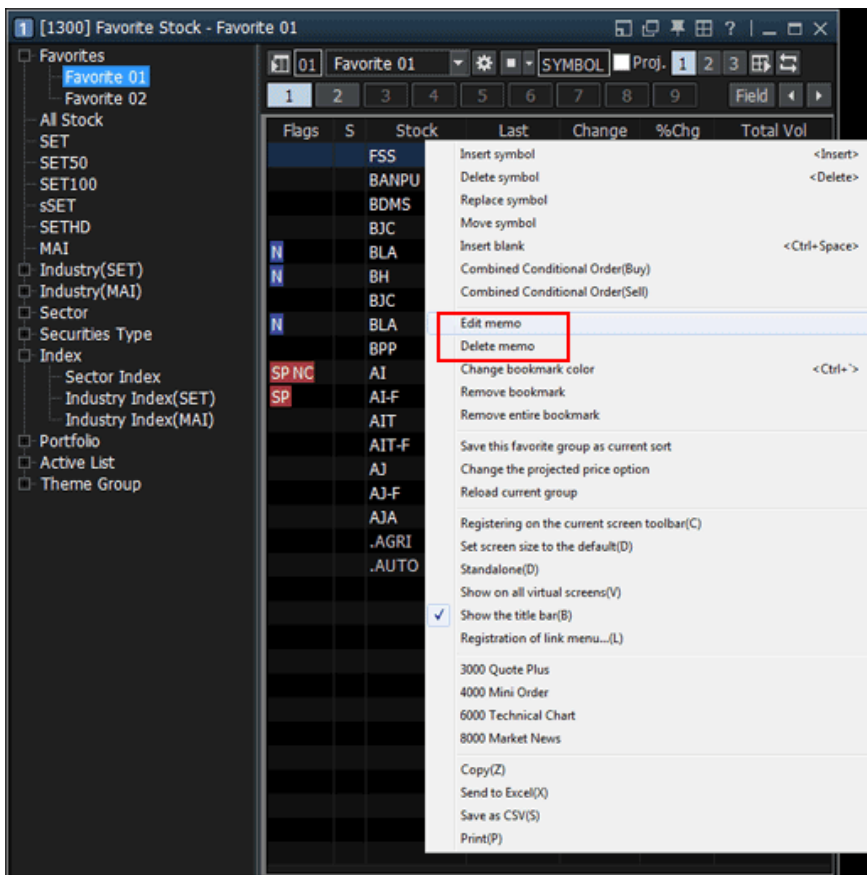


6. A “Memo” function is provided to write down and store memo about a favorite stock in an empty box.

- 1 Place the mouse cursor in an empty space to add a memo on the favorite stock list, click the right mouse button and select ‘Enter memo’.



2 An existing memo can be edited or deleted using 'Edit memo, Delete memo' menu.



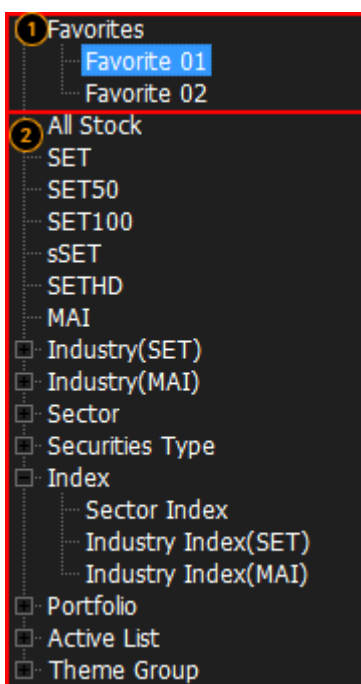
## 7. Understanding of Screen

### 1 Favorite Group Selection Tree

"Favorite Group Selection Tree" is generated on the left side by clicking the button at the top of the screen.

"Favorite Group Selection Tree" allows the user to select a favorite group to be viewed from the general stock search group provided by HERO FSS.

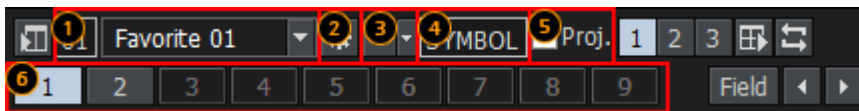
Favorite groups under "Favorite Group Selection Tree" can be largely divided into two parts.






- 1 These favorite groups are set by the user, so they can be edited and deleted freely.
- 2 Default favorite groups provided by FSS HERO cannot be changed or deleted.

## 2 Top-Selection Part

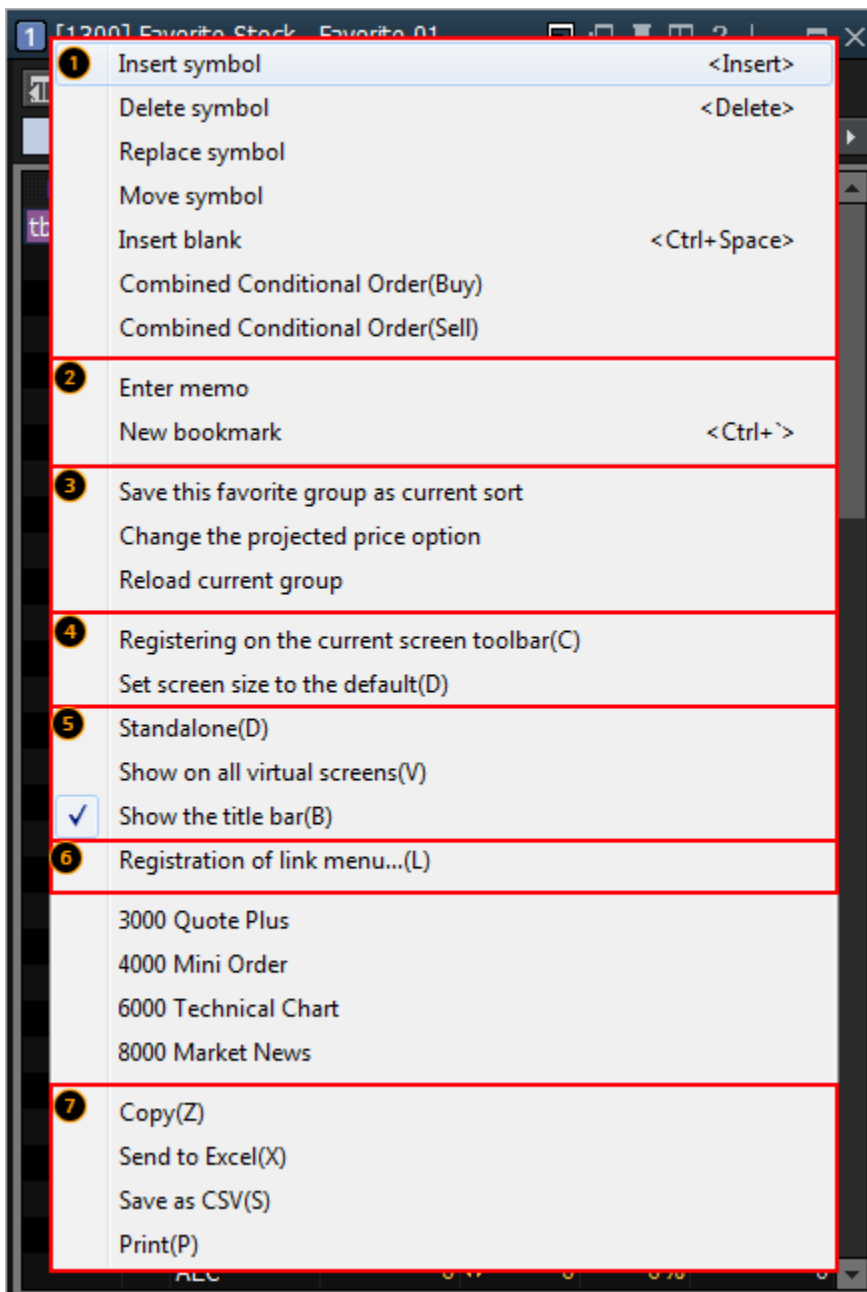
“Top-Selection Part” can configure/execute selection and movement of favorite stocks, stock and screen, setting of view fields and flag monitoring.



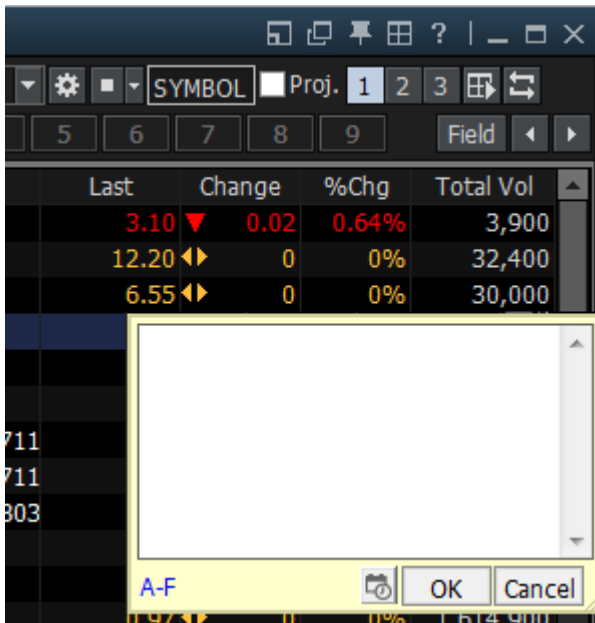
- 1 Selection of favorite stocks  
Click  button to show Favorite Group Selection Tree.  
When ‘Favorite Group Selection Tree’ is not activated on the left side of the screen, a favorite group can be selected easily using Favorite Group Selection Tree.
- 2 Setting button: Click  button to open the Favorite Stock Setting pop-up window for “Resister Item, Field Settings, Screen Settings”.  
Refer to ‘8. Favorite Stock Setting’ below for detailed setting information.
- 3 Rotator view: Rotator view is a function that allows the user to view overall prices of all registered favorite groups without control by automatically updating prices of favorite stocks in the favorite groups according to conditions set by the user.  
Click  button to select time and direction of view.
- 4 A stock can be added to the favorite group in view by entering a symbol.
- 5 If checked, projected match price and volume of opening/closing bid/offer are shown. This option must be used at opening/closing time.
- 6 The user can easily move between favorite groups using these buttons.

## 3 Field Window

The field window is used to identify price flow of favorite stocks at a sight. Double click a favorite stock on the field window to open the linked pop-up window set by the user. Click the right mouse button to use various menus including insert/delete symbol, insert blank and buy/sell price monitoring.

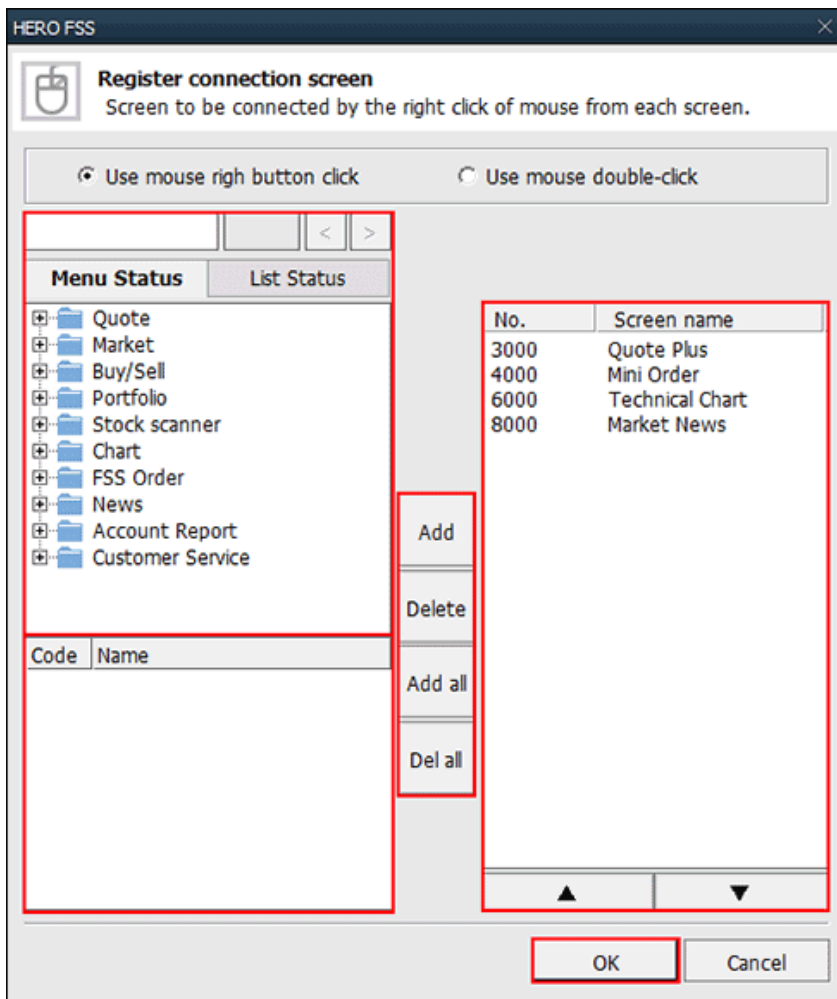


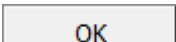
- 1 Insert symbol/Delete symbol/Replace symbol/Move symbol/Insert blank/Combine Conditional Order (Buy)/Combine Conditional Order(Sell) Click each menu to add/delete/replace symbol directly on the field window without opening the favorite stock registration window. An empty symbol can also be added to the field window. In addition, select "Combine Conditional Order(Buy)/Combine Conditional Order(Sell)" after selecting a specific stock to open the monitoring pop-up window and monitor buy and sell prices of the stock.
- 2 Enter memo/New bookmark Opinions and thoughts of the user about a stock can be recorded as a memo, which can be checked at any time when viewing prices. It can be used as a simple user database for stocks in addition to price view.  
Bookmarked stocks are displayed in a different color.



- 3 Save this favorite group as current sort/Change the projected price option
  - A Save this favorite group as current sort: Right click each item on the field window to resort the item in 'ascending order/descending order'. Also, resorted favorite group is saved in its current status by 'Insert symbol/Replace symbol/Delete symbol/Insert blank'.
  - B Change the projected price option: If the 'Project' item is checked at the top of the screen or this menu is selected, the screen is switched to view projected match price.
- 4 Registering on the current screen toolbar(C)/Set screen size to the default(D)  
'[1300] Favorite Stock' screen is registered on the toolbar. If screen size was changed, it is set back to default size.
- 5 Special functions
  - A Standalone(D): The screen is recognized as a standalone window and moved out of HERO FSS for free screen composition.
  - B Show on all virtual screens(V): The current screen is shown on all 4 virtual screens.
  - C Show the title bar(B): The title bar at the top of the screen can be shown or hidden.
- 6 Registration of link menu  
On each screen, a screen can be registered to be linked to the right mouse button. The list of linked screens can be viewed at the bottom.



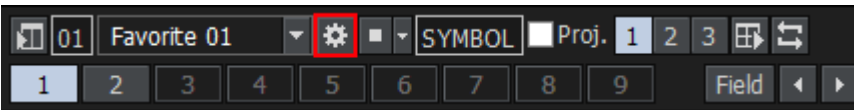


- A** Select screens to be linked.  
Screens are selected by entering screen number at the top or double clicking at screens to be linked on the list.
- B** This is a list of screens that match the screen number entered.  
Double click the screen to be registered as linked screen.
- C** Add/Delete/Add all/Del all  
Add: Click the mouse button in the link screen selection area to register the selected screen.  
Delete: Click the screen from the list of linked screens and click this button to delete the screen.  
Add all: All screens on the list are added to link screens.  
Del all: All existing link screens are deleted.
- D** This is the list of link screens. Double click a screen to be removed from link screens.
- E** Click  to complete registration of link screens.

## 7 Send to Excel(X)/Save as CSV(S)

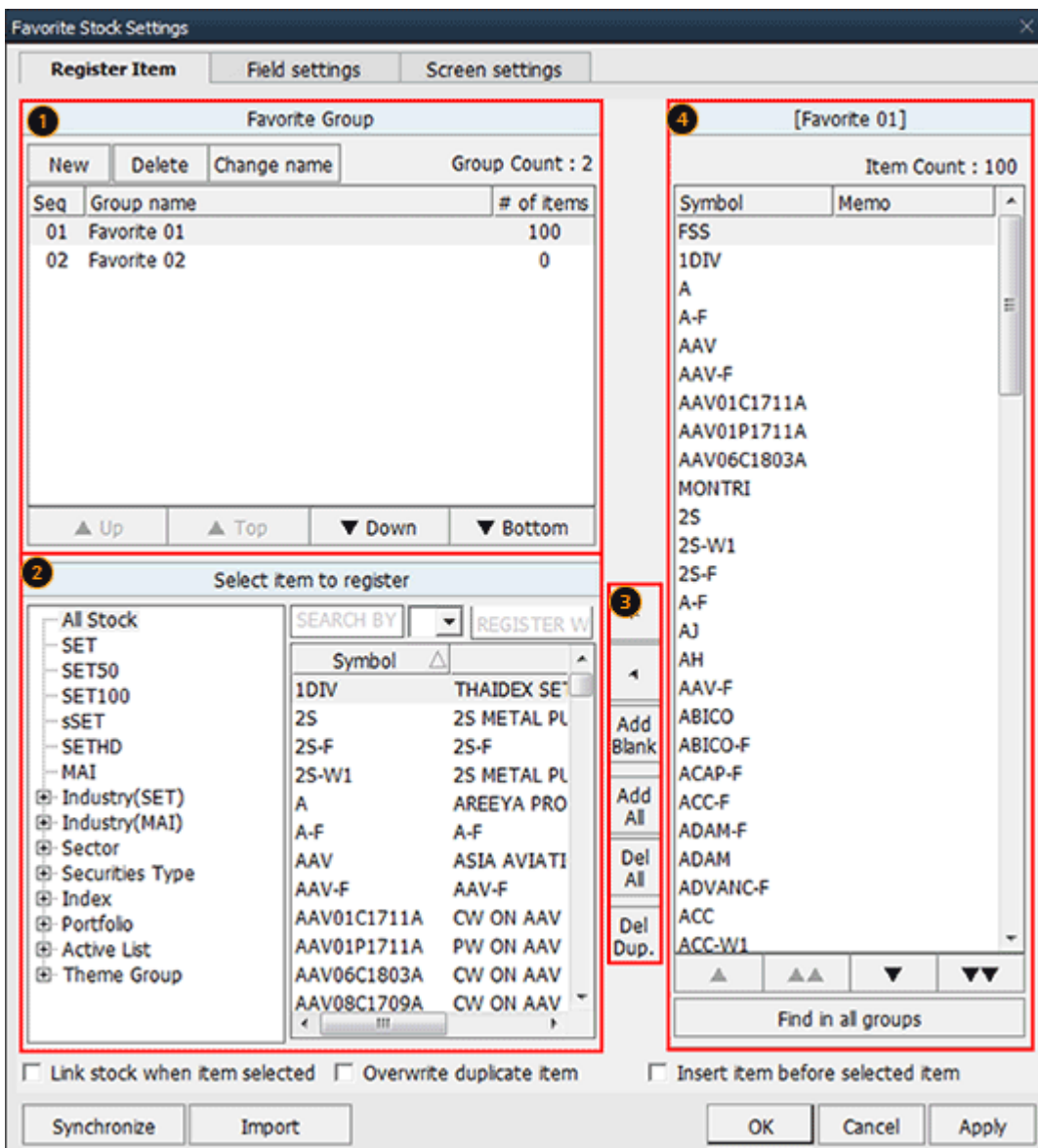
- A** Send to Excel(X): Click this button to send data on the screen to Excel program. Since data created using 'Send to Excel' are not saved, data must be saved before closing Excel.
- B** Save as CSV(S): This is a function that saves data as an Excel file.

favorite stocks, screen settings such as fields (items) to be viewed on the field window and link screens can be done as well.



## 1 Register Stock

This screen can add/delete/change favorite group and add or delete stocks to and from favorite group.



- 1 Click an existing favorite stock group and then click each button to create a new favorite group, delete an existing favorite group or change group name.
- 2 Select a stock to be registered. It can also be selected from the tree menu.
- 3 Add/delete favorite stock
- 4 Stocks registered as [Favorite Stocks] can be edited and changed.

## 2 Field Settings

Items to be viewed on the favorite stock screen can be selected, and fields for each item such as 'Align, Digit, Field Name' can be set.

Favorite Stock Settings

Register Item
Field settings
Screen settings

1 Edit fields and set group

Basic
Quote
Foreigner
Finance
Profit/Loss

Field	Flags	S	Stock	Last	Change	%Chg	Total Vol		New
Align	Left	C	Left	Right	Right	Right	Right		Rename
Digit				1	1	0.01	1		Delete
Field Name	Flags	S	Stock	Last	Change	%Chg	Total Vol		
Digit	7	3	11	10	9	8	11		
Delete	Delete	Dele		Delete	Delete	Delete	Delete		

2 Fixed Column Count 0
3 < > Add field Delete field Field setting

4 Field color

☒ Skin

Odd
Even

☐ Selected Row
☐ Highlight

1 Line spacing
☐ horizontal lines

5 Row settings

Number of visible rows : 30
Row Height (default is 2): 2

6 Candle thickness

☒ Normal
☐ Bold

7 Initialize

Field width
Field Conf.
Color

8 Field additional settings

Change field ▲▼ Show as shape ☒ Size depending on %Chg

☒ Show balloon tips Account : 6062461 (Cash)

☒ Change, %Chg are filled with ceiling/floor colors : Ceiling ☐ Floor ☐


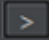


☐ During single-price auction, calculate the Est P/L, Yield with the projected price.  
(It is applied only to simulation values.)

OK Cancel Apply

- 1 Edit fields: This screen can edit general field information of selected fields like align/digit/width/field name.

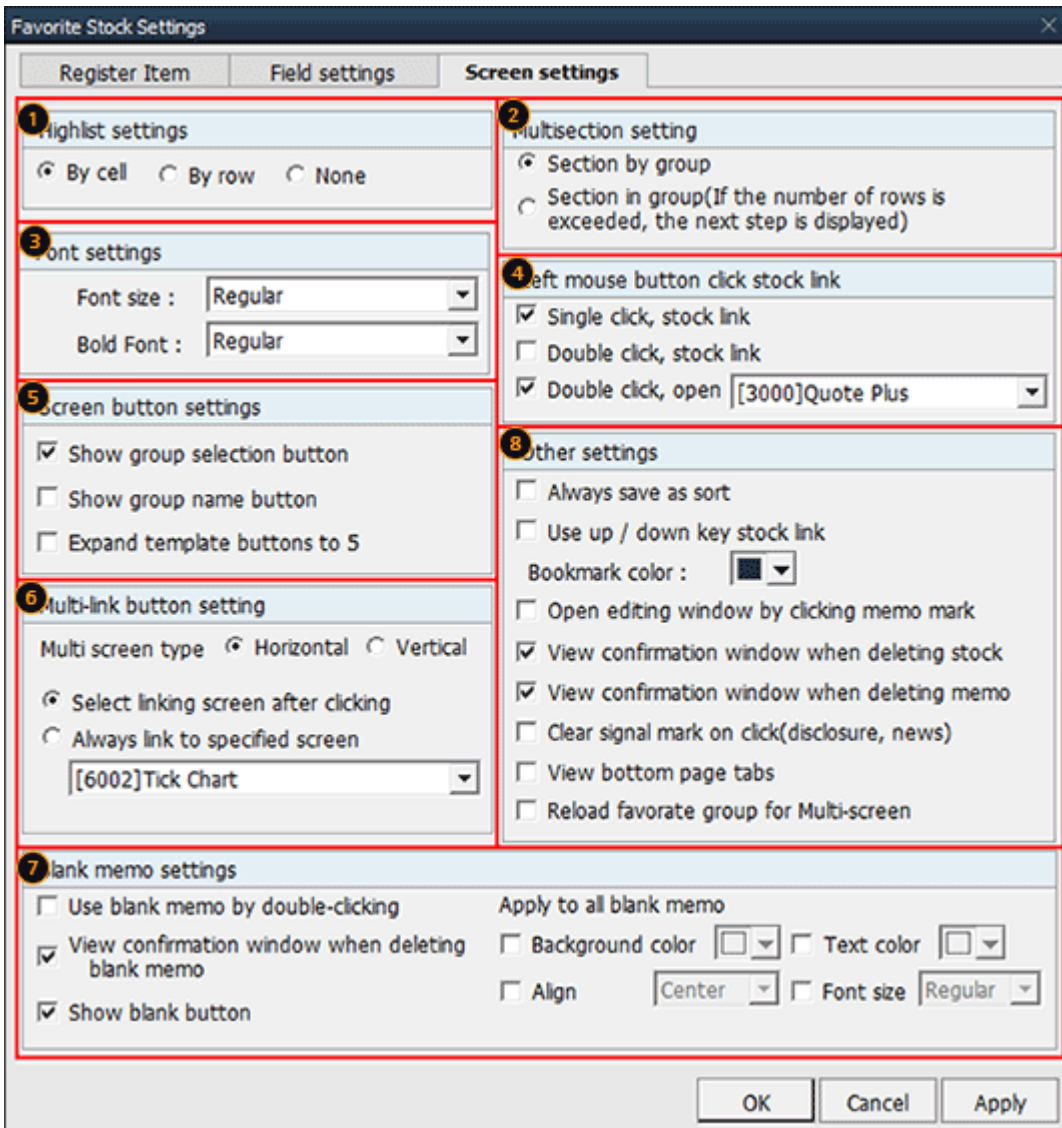
A	Field	Flags	S	Stock	Last	Change	%Chg	Total Vol
B	Align	Left	C	Left ▾	Right ▾	Right ▾	Right ▾	Right ▾
C	Digit			1 ▾	1 ▾	0.01 ▾	1 ▾	
D	Field Name	Flags	S	Stock	Last	Change	%Chg	Total Vol
E	Digit	7	3	11	10	9	8	11
F	Delete	Delete	Delete		Delete	Delete	Delete	Delete

- A Name of selected field
  - B Left/center/right align
  - C Digit of numbers shown as 1/10/100/1,000
  - D Field name shown for favorite stock, can be changed by the user
  - E Number of digits displayed on the screen
  - F Click Delete button to delete the field.
- 2 This option can decide the number of fields that are fixed vertically and cannot be moved.  
This is useful if used after arranging important stocks on top of favorite stocks.
- 3 Field edit buttons
  - A Edit Field: General field information such as arrange and number unit of the currently selected fields can be edited.

- B** Move Field: Click   button to move the selected field to left or right.
- C** Add Field: Click  button to open the Add Field pop-up window and select a field to be added.  
 ※ Precaution: When adding a field, real-time processing can be delayed by price processing and calculation if remaining portfolio is 200 stocks or more.
- D** Delete Field: Click  button to open the Delete Field pop-up window and select a field to be deleted.
- 4** Grid color option can be changed.
- 5** Number of visible rows and row height can be designated.
- 6** Candle thickness can be designated.
- 7** Field width, Field configuration and Field color can be reset to default settings.
- 8** The user can configure various additional settings for convenient use.

### 3 Screen Settings

Favorite stock data setting, multi-section setting, left mouse button link function, save setting, font setting and screen button setting can be done.



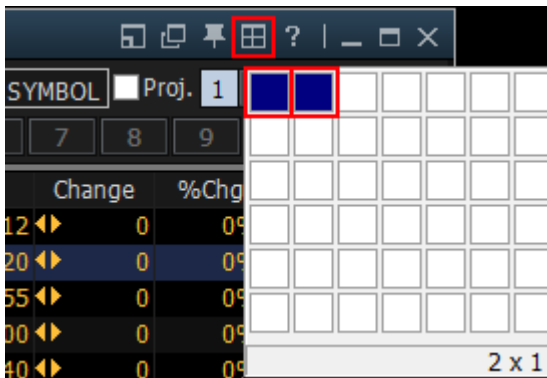
1 Display of data change can be selected among "By cell/By row/None".

2 Multi-section setting

Select "Section by group" to display the group in a section regardless of the number of rows. Select "Section in group" to display stocks exceeding the number of rows in the next section, if multi-section

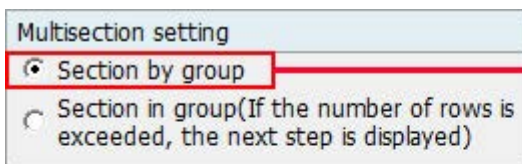
is configured by length\*width at the top right corner of the screen

#### A Creation of multi-section



#### B Section by group

Stock prices of different favorite groups can be viewed on a multi-section screen



Flags	S	Stock	Last	Change	%Chg	Total Vol	Flags	S	Stock	Last	Change	%Chg	Total Vol
		FSS	3.12 ▲	0	0%	425,200			FSS	3.12 ▲	0	0%	425,200
		IDIV	12.20 ▲	0	0%	32,400			IDIV	12.20 ▲	0	0%	32,400
		A	6.55 ▲	0	0%	30,000			A	6.55 ▲	0	0%	30,000
		A-F	3.00 ▲	0	0%	0			A-F	3.00 ▲	0	0%	0
		AAV	6.25 ▼	0.00	0.78%	39,835,000			AAV	6.25 ▼	0.00	0.78%	39,835,000
		AAV-F	6.60 ▲	0	0%	0			AAV-F	6.60 ▲	0	0%	0
		AAV01C1711	0.34 ▲	0	0%	7,029,200			AAV01C1711	0.34 ▲	0	0%	7,029,200
		AAV01P1711	0.33 ▼	0.01	2.94%	3,572,800			AAV01P1711	0.33 ▼	0.01	2.94%	3,572,800
		AAV06C1803	0.45 ▲	0	0%	452,000			AAV06C1803	0.45 ▲	0	0%	452,000
		MONTRI	6.10 ▲	0	0%	0			MONTRI	6.10 ▲	0	0%	0
		2S	4.76 ▲	0	0%	246,600			2S	4.76 ▲	0	0%	246,600
		2S-W1	0.97 ▲	0	0%	1,614,900			2S-W1	0.97 ▲	0	0%	1,614,900
		2S-F	1.90 ▲	0	0%	0			2S-F	1.90 ▲	0	0%	0
		A-F	3.00 ▲	0	0%	0			A-F	3.00 ▲	0	0%	0
		AJ	14.40 ▲	0	0%	106,900			AJ	14.40 ▲	0	0%	106,900
		AH	24.90 ▲	0.10	0.40%	171,600			AH	24.90 ▲	0.10	0.40%	171,600
		AAV-F	6.60 ▲	0	0%	0			AAV-F	6.60 ▲	0	0%	0
		ABICO	9.60 ▼	0.10	1.01%	226,300			ABICO	9.60 ▼	0.10	1.01%	226,300
		ABICO-F	6.60 ▲	0	0%	0			ABICO-F	6.60 ▲	0	0%	0
		ACAP-F	3.50 ▲	0	0%	0			ACAP-F	3.50 ▲	0	0%	0
		ACCF	0.4 ▲	0	0%	0			ACCF	0.4 ▲	0	0%	0
		ADAM-F	4.00 ▲	0	0%	0			ADAM-F	4.00 ▲	0	0%	0
		ADAM	14.60 ▲	0	0%	0			ADAM	14.60 ▲	0	0%	0
		ADVANC-F	196.80 ▼	3.50	2.81%	100			ADVANC-F	196.80 ▼	3.50	2.81%	100
		ACC	6.52 ▼	0.01	1.99%	25,900			ACC	6.52 ▼	0.01	1.99%	25,900
		ACC-W1	6.13 ▼	0.01	2.14%	150,100			ACC-W1	6.13 ▼	0.01	2.14%	150,100
		ADVANC	196.80 ▼	0.50	0.26%	2,937,400			ADVANC	196.80 ▼	0	0%	200,600
		AIT	28.00 ▲	0.25	0.90%	102,700			AIT	28.00 ▲	0.25	0.90%	15,000
		AECW4	0.17 ▲	0.01	6.25%	34,300			AECW4	0.17 ▲	0.01	6.25%	34,300
		AEC	0.59 ▲	0.01	1.72%	1,077,400			AEC	0.59 ▲	0.01	1.72%	1,077,400

#### C Section in group

A list of favorite stocks exceeding "Number of visible rows" configured in Favorite Stock Settings  
→ Field settings → Row settings is displayed in the next section.





Multisection setting

☐ Section by group

☒ Section in group(If the number of rows is exceeded, the next step is displayed)

The screenshot shows the 'Favorite Stock' screen with a table of stock data. The table has columns for Page, Stock, Last, Change, %Chg, and Total Vol. The data is organized into sections, and the 'Section in group' setting is highlighted in the top left corner.

3 Size and boldness of text displayed on the favorite screen can be set.

4 Left mouse button click stock link

A Single click, stock link / Double click, stock link

When a stock is clicked on the [1300] Favorite Stock screen, the screen is automatically linked to another screen with the stock. Such stock link function can be set to single click or double click.

If this function is not selected, favorite stock is not linked by clicking.

B User designated menu for double click

The designated screen is automatically opened by double clicking the mouse.

## 5 Screen button setting

**Screen button settings**  
☒ Show group selection button  
☒ Show group name button  
☒ Expand template buttons to 5

## 6 Multi-link button setting

- A Click button at the top right corner of the screen to select screen type of multi-section between horizontal and vertical.
- B If Select linking screen after clicking is selected, clicking button creates multi-section.
- C If Always link to specified screen is selected, clicking button runs designated screen.

## 7 Align position of blank memo, background color and entering of blank memo with double click can be configured.

## 8 Other settings

Other settings can decide convenient functions of the screen such as Always save as sort, Use up/Down key stock link and Open editing window by clicking memo mark.